

YANMAR DIESEL ENGINE

PARTS CATALOG

● パーツカタログ

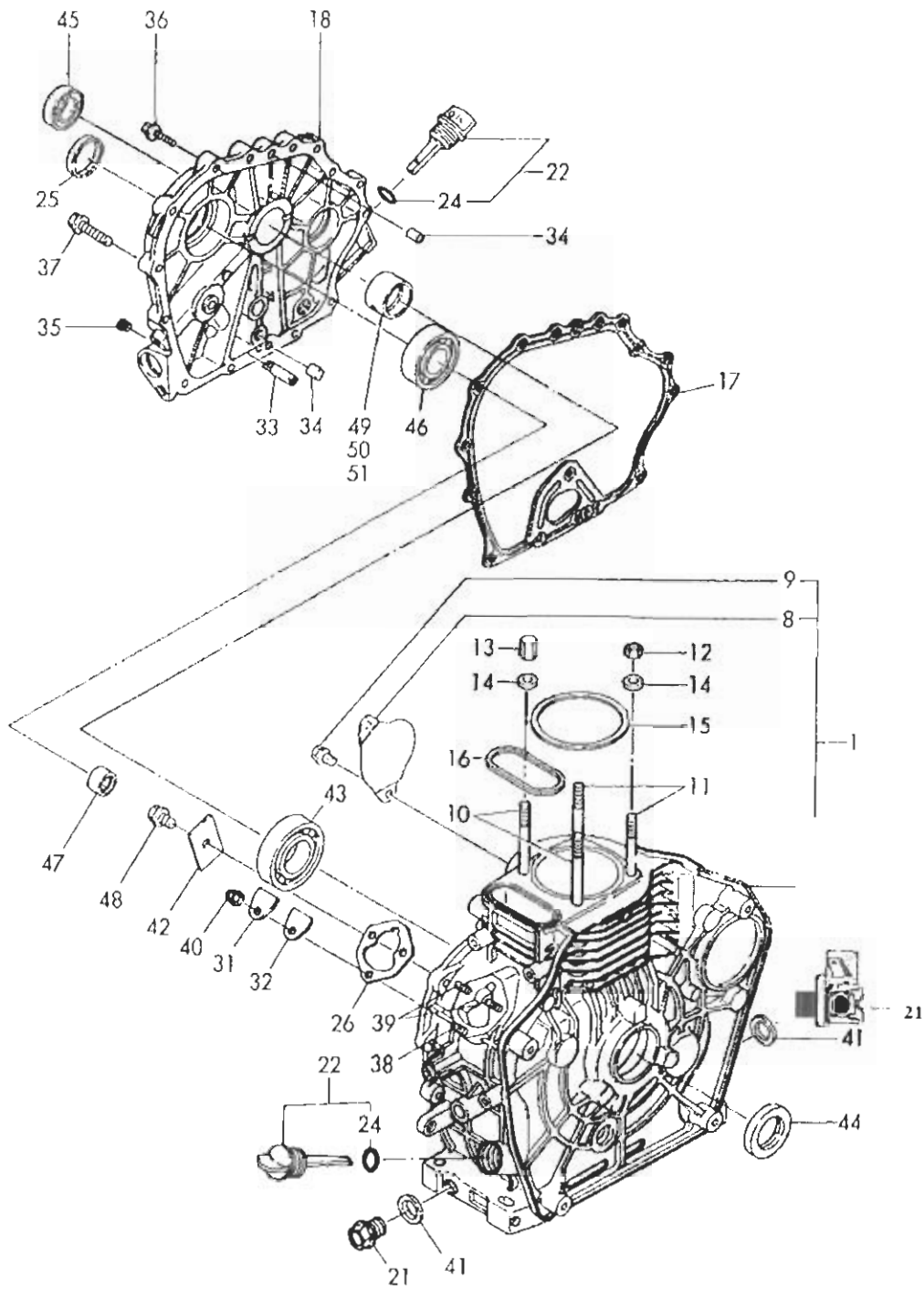
FD 4500



L48ARE-S
L48ARE-SE

MODEL

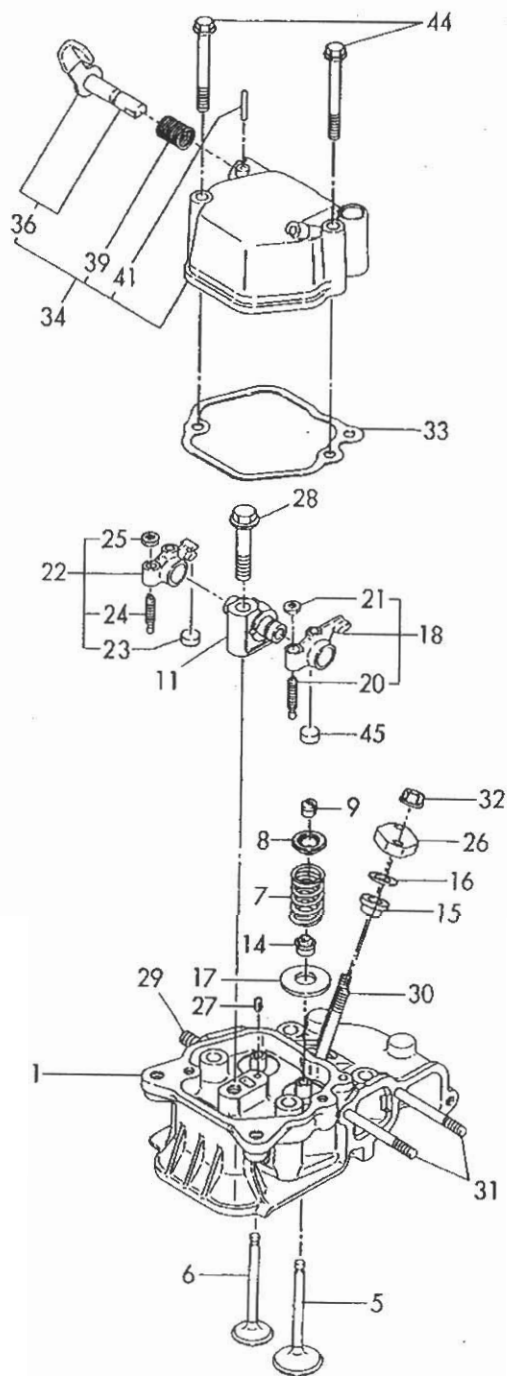
Fig. 1 CYLINDER BLOCK



Unit Spec: FIG01. CYLINDER BLOCK L48ARE-S, L48ARE-SE

Ref	Part #	Qty	Description
1	714771-01560	1	BLOCK ASSY, CYLINDER
8	114350-01700	1	.COVER, STARTER
9	26106-100122	2	.BOLT M10X 12 PLATED
10	114250-01200	2	STUD, CYL. HEAD
11	114250-01210	2	STUD, CYL. HEAD
12	114250-01220	2	NUT 8
13	114250-01250	2	NUT 8
14	124950-01250	4	HASHER
15	114770-01340	1	GASKET, CYL. HEAD
16	114250-01380	1	O-RING
17	114250-01412	1	GASKET, CRANK CASE
18	114254-01470	1	CASE COVER ASSY
21	105425-01690	1	PLUG M16 RDG2333 X 1
22	160710-01760	2	CAP, W/LUB.OIL GAUGE
24	24311-000180	2	.O-RING 1A P-18.0
25	160210-01790	1	COVER
26	114250-01800	1	SHIM SET
31	114250-01830	1	COVER, INSPEC.WINDOW
32	114250-01840	1	GASKET
33	114250-35150	1	PIPE, LUB. OIL
34	22312-080120	2	PARALLEL PIN 8X12
35	23871-010000	1	PLUG PT1/8,SCREW
36	26106-060252	14	BOLT M 6X 25 PLATED
37	26106-080352	1	BOLT M 8X 35 PLATED
38	26226-060182	1	STUD M 6X 18 PLATED
39	26226-060222	2	STUD M 6X 22 PLATED
40	26366-060002	3	NUT M 6
41	43400-500490	2	SEAL WASHER 16
42	114250-02030	1	RETAINER, BEARING
43	114250-02113	1	BALL BEARING
44	160110-02220	1	SEAL, OIL
45	160210-02220	1	SEAL, OIL
46	24101-062050	1	BALL BEARING
47	24162-152112	1	NEEDLE BEARING
48	26106-080122	1	BOLT M 8X 12 PLATED
49	114250-02100	1	BEARING, MAIN
50	114250-02200	1	BEARING US=0.25,MAIN
51	114250-02210	1	BEARING US=0.50,MAIN

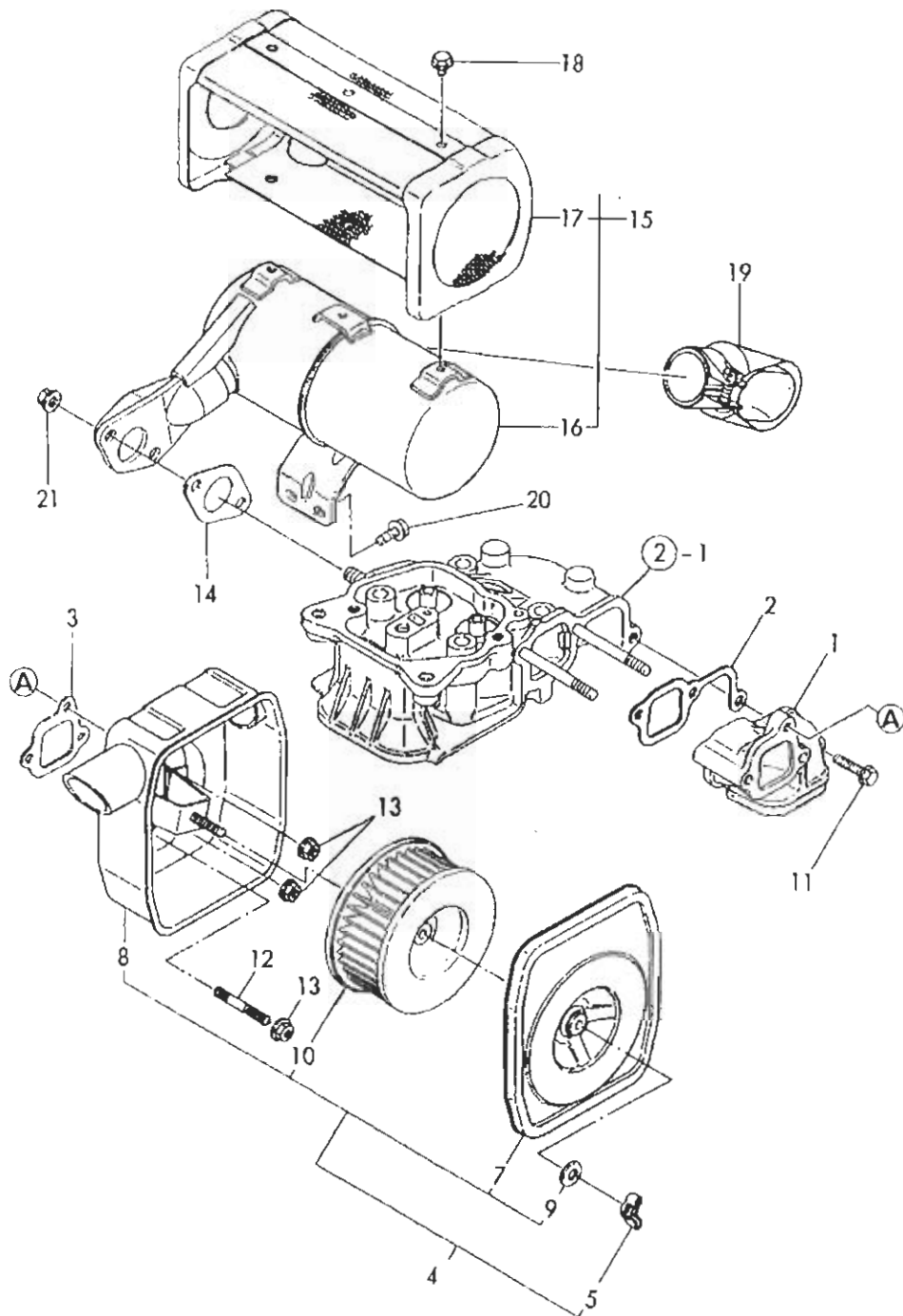
Fig. 2 CYLINDER HEAD & BONNET



Unit Spec: FIG02. CYLINDER HEAD & BONNET L48ARE-S, L48ARE-SE

Ref	Part #	Qty	Description
1	114250-11020	1	HEAD ASSY, CYLINDER
5	114250-11101	1	VALVE, SUCTION
6	114250-11113	1	VALVE, EXHAUST
7	114250-11120	2	SPRING, VALVE
8	114250-11180	2	RETAINER, SPRING
9	714250-11570	2	COTTER
11	114250-11290	1	SUPPORT, ROCKER ARM
14	114250-11340	2	SEAL, VALVE STEM
15	114250-11460	1	GASKET, NOZZLE
16	114350-11470	1	SPACER
17	114250-11600	2	WASHER
18	114250-11651	1	ARM ASSY, INTAKE
20	114250-11240	1	.SCREW, VALVE ADJUST.
21	26756-060002	1	.LOCK NUT M 6 PLATED
22	714270-11660	1	ARM ASSY, EXHAUST
23	119260-11370	1	.CAP, VALVE
24	114250-11240	1	.SCREW, VALVE ADJUST.
25	26756-060002	1	.LOCK NUT M 6 PLATED
26	114250-11900	1	RETAINER, NOZZLE
27	22351-040008	1	SPRING PIN 4X 8
28	26106-080452	1	BOLT M 8X 45 PLATED
29	26216-080182	2	STUD M 8X 18 PLATED
30	26226-060502	2	STUD M 6X 50
31	26226-060552	2	STUD M 6X 55
32	26366-060002	2	NUT M 6
33	114250-11310	1	GASKET, BONNET
34	114250-11951	1	BONNET ASSY, HEAD
36	114250-03591	1	.SHAFT ASSY, DECOMP.
39	114250-03640	1	.SPRING
41	22312-030160	1	.PARALLEL PIN 3X16
44	26106-060552	2	BOLT M 6X 55 PLATED
45	119260-11370	1	CAP, VALVE

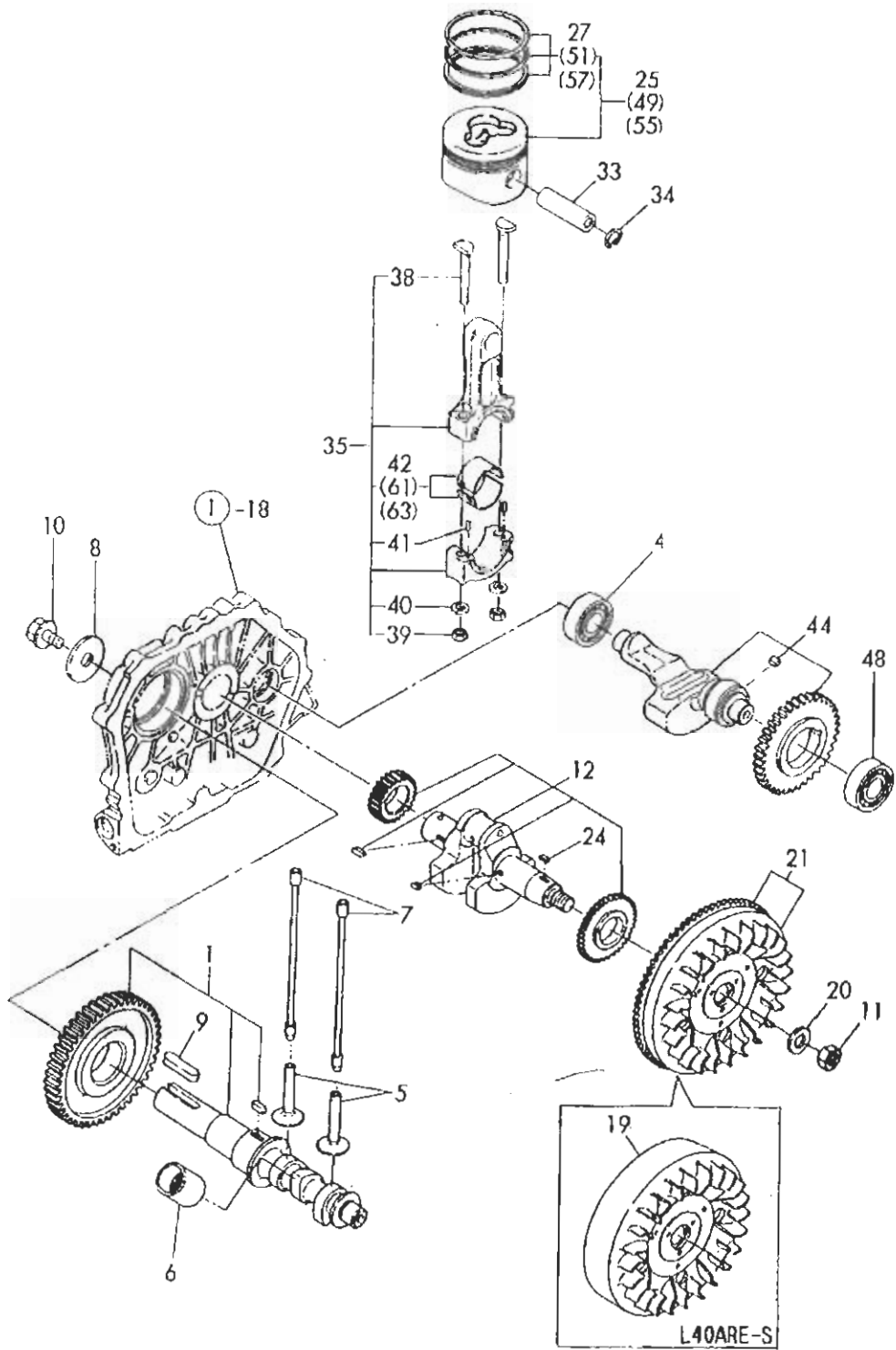
Fig. 3 AIR CLEANER & MUFFLER



Unit Spec: FIG03. AIR CLEANER & MUFFLER L48ARE-S, L48ARE-SE

Ref	Part #	Qty	Description
1	114250-12010	1	PIPE, AIR INTAKE
2	114250-12200	1	GASKET, AIR INTAKE
3	114250-12210	1	GASKET, AIR CLEANER
4	714250-12560	1	CLEANER ASSY, AIR
5	114250-12550	1	.WING NUT (M6)
7	114250-12520	1	.COVER ASSY
8	114250-12530	1	.CASE ASSY
9	114250-12560	1	.WASHER, SEAL
10	114250-12580	1	.ELEMENT, WET AIR
11	26106-060252	1	BOLT M 6X 25 PLATED
12	26226-060142	1	STUD M 6X 14 PLATED
13	26366-060002	3	NUT M 6
14	114250-13200	1	GASKET, MUFFLER
15	114250-13521	1	MAFFLER W/COVER
16	114250-13531	1	.MUFFLER ASSY
17	114250-13701	1	.COVER, MUFFLER
18	26106-060082	6	.BOLT M 6X 8 PLATED
19	114268-13800	1	EXTENSION, EXH.
20	26106-060122	2	BOLT M 6X 12 PLATED
21	26366-080002	2	NUT 8

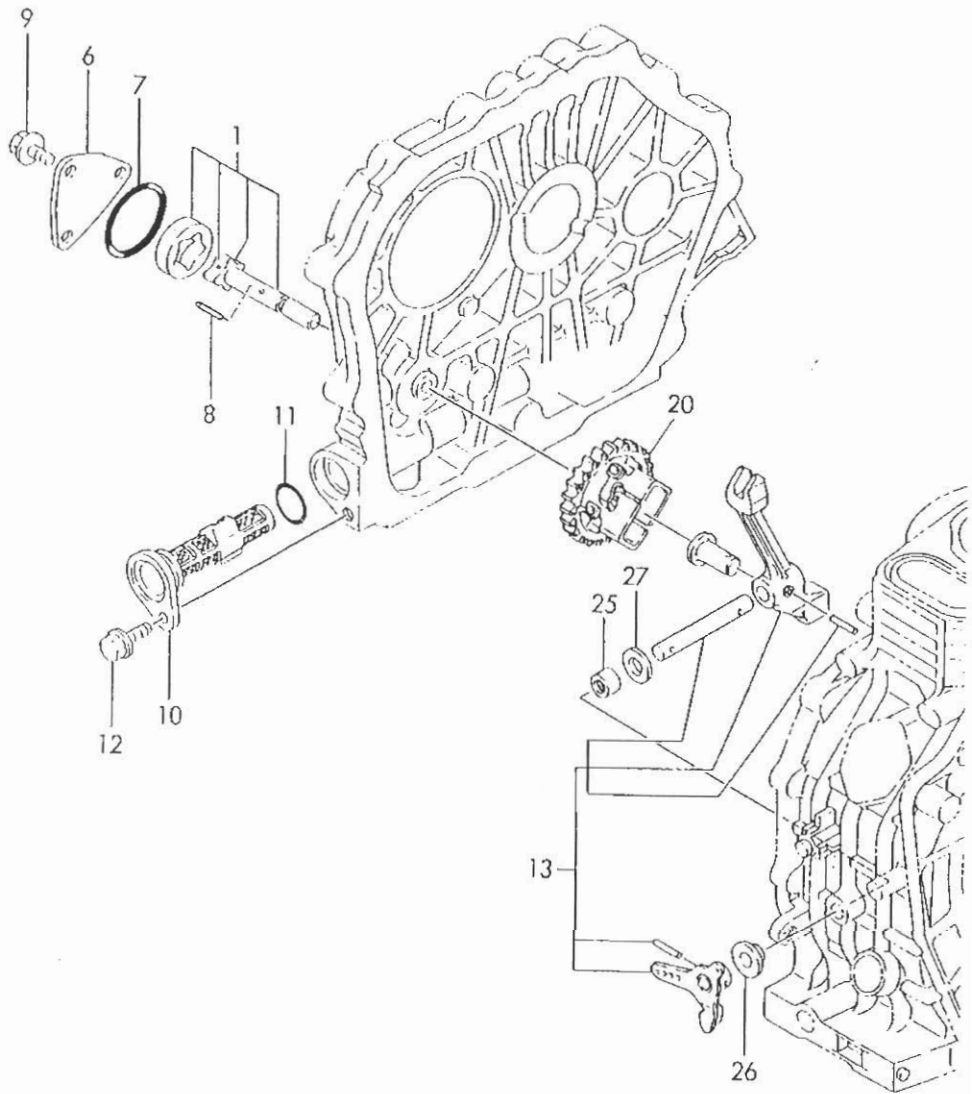
Fig. 4 CRANKSHAFT, PISTON & CAMSHAFT



Unit Spec: FIG04. CAMSHAFT, CRANKSHAFT & PISTON L48ARE-S, L48ARE-SE

Ref	Part #	Qty	Description
1	714278-14680	1	CAMSHAFT (D) ASSY.
5	114250-14200	2	TAPPET, SUC./EXH.
6	114250-14260	1	TAPPET, FUEL
7	114250-14450	2	ROD, PUSH
8	160310-14550	1	WASHER
9	22512-050300	1	KEY 5X 30
10	26106-080202	1	BOLT M 8X 20 PLATED
11	103854-01221	1	NUT M16
12	714278-21710	1	CRANKSHAFT ASSY(S)
19	114780-21400	1	FLYWHEEL (D) L48ARE-S
20	114250-21550	1	WASHER, FLYWHEEL
21	114781-21590	1	FLYWHEEL(DE) W/GEAR L48ARE-SE
24	22512-040120	1	KEY 4X 12
25	714780-22720	1	PISTON W/RINGS
27	714770-22500	1	RING SET, PISTON
33	114250-22302	1	PIN, PISTON D=19
34	22252-000190	2	CIRCLIP 19
35	714770-23700	1	ROD ASSY. (PIN19.B25)
38	114250-23200	2	.BOLT, ROD
39	114250-23220	2	.NUT, ROD BOLT
40	114250-23250	2	.WASHER
41	22312-030080	2	.PARALLEL PIN 3X 8
42	714770-23600	1	.BEARING, CRANKPIN
44	714770-28510	1	SHAFT ASSY, BALANCER
48	24101-062024	2	BALL BEARING
49	714780-22620	1	PISTON W/RING OS=.25
51	714770-22540	1	.RING SET O.S.=0.25
55	714780-22580	1	PISTON W/RING OS=0.5
57	714770-22550	1	.RING SET O.S.=0.50
61	714770-23610	1	BEARING U.S=0.25,PIN
63	714770-23620	1	BEARING U.S=0.50,PIN

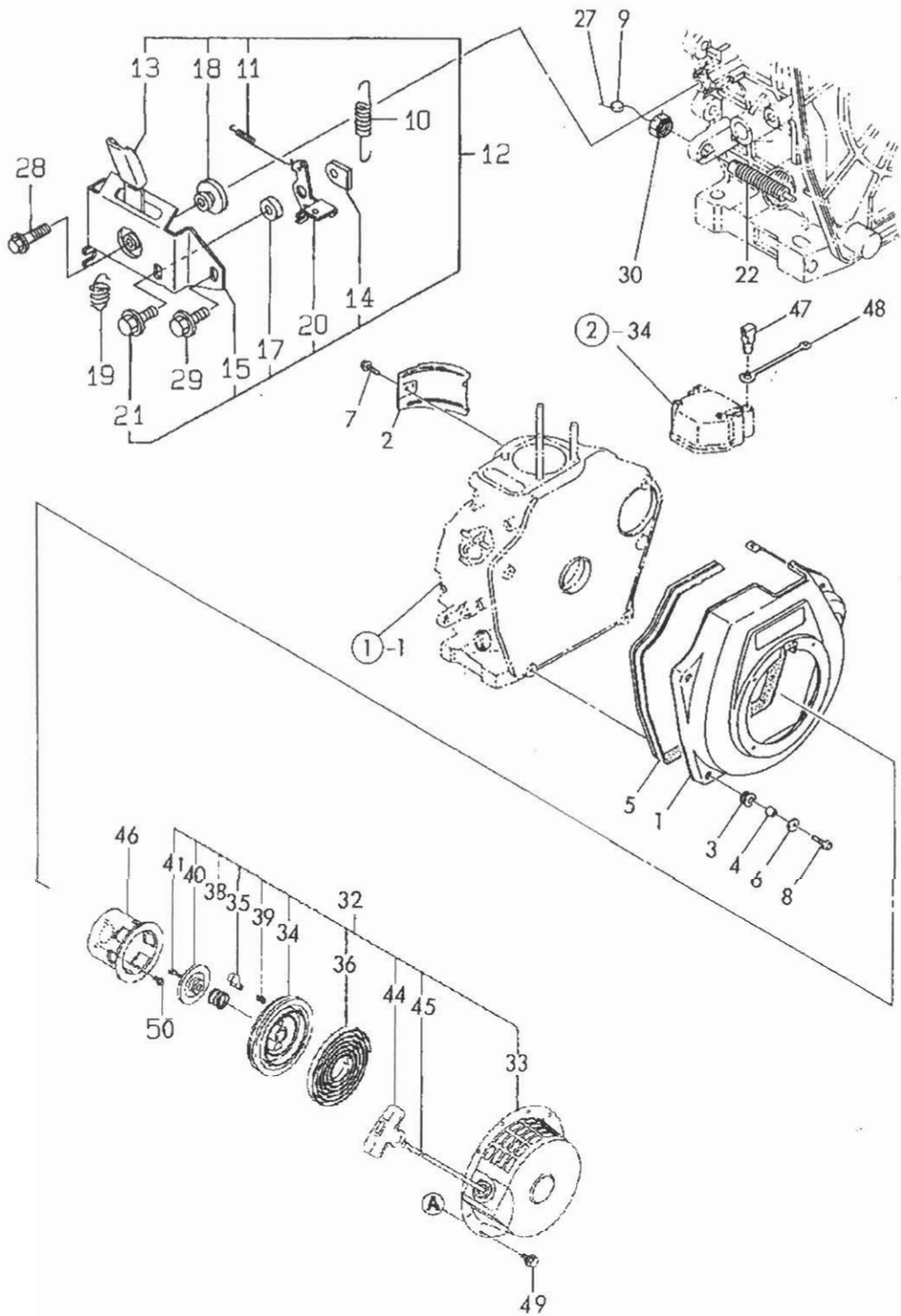
Fig. 5 LUB. OIL & GOVERNOR



Unit Spec: FIG05. LUB. OIL PUMP & GOVERNOR L48ARE-S, L48ARE-SE

Ref	Part #	Qty	Description
1	114250-32010	1	PUMP ASSY, LUB.OIL
6	114250-32070	1	COVER, LUB. OIL PUMP
7	103338-32570	1	O-RING
8	22312-030160	1	PARALLEL PIN 3X16
9	26476-060142	3	BOLT M 6X 14
10	114250-35070	1	STRAINER, LUB. OIL
11	24341-000224	1	O-RING 1A S-22.4
12	26106-060162	1	BOLT M 6X 16 PLATED
13	714278-61500	1	LEVER ASSY, GOVERNOR
20	714770-61700	1	GOVERNOR ASSY
25	121450-61520	2	NEEDLE BEARING FJ810
26	114250-61900	1	BUSH, THRUST
27	22137-080000	1	UASHER 8,POLISHED

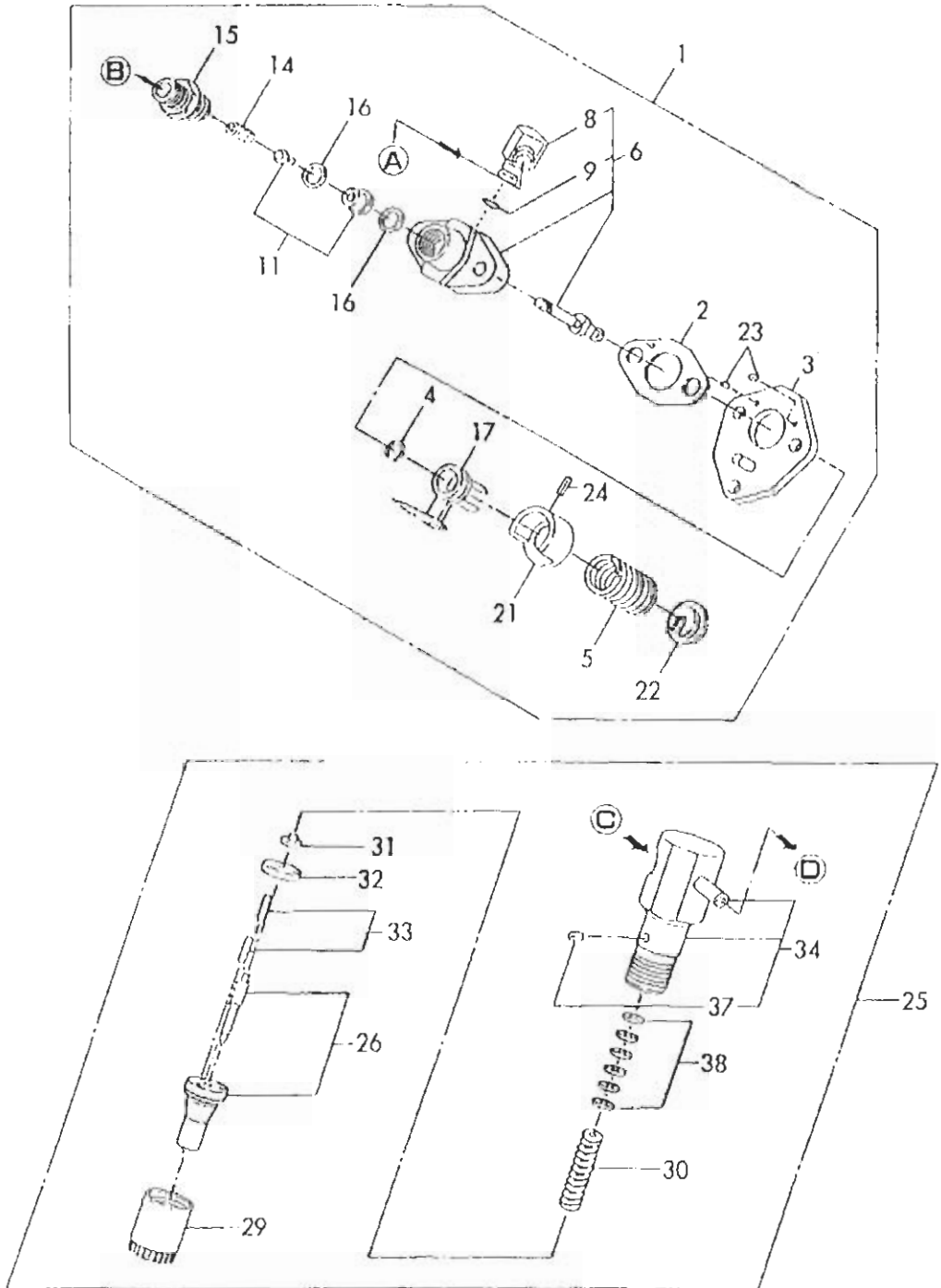
Fig. 6 COOLING & STARTING DEVICE



Unit Spec: FIG06. COOLING & STARTING DEVICE L48ARE-S, L48ARE-SE

Ref	Part #	Qty	Description
1	114780-45100	1	CASE(D), COOLING FAN
2	114250-45211	1	COVER, CYLINDER
3	114250-45300	4	SHOCK ABSORBER
4	114250-45310	4	COLLAR
5	114250-45330	1	SEAL, FAN CASE
6	160120-76940	4	WASHER
7	26476-060142	1	BOLT M 6X 14
8	26476-060252	4	BOLT M 6X 25
9	135210-61090	2	LEAD
10	114770-66010	1	SPRING, REGULATOR
11	114250-66331	1	SPRING, RETURN
12	183250-66511	1	BRACKET ASSV,REGULAT
13	183250-66301	1	.HANDLE, EGULATOR
14	183250-66341	1	.SHAFT, HANDLE
15	183250-66351	1	.BRACKET, REGULATOR
16	114250-66440	1	.BOLT, ADJUSTING
17	183250-66361	1	.COLLAR
18	183250-66371	2	.COLLAR
19	114250-66200	1	.SPRING, RETURN
20	183250-66321	1	.LEVER
21	26106-060162	1	.BOLT M 6X 16 PLATED
22	114354-66250	1	TORQUE SPRING ASSY
27	22451-060000	2	WIRE 0.6
28	26106-060202	1	BOLT M 6X 45 PLATED
29	26476-060142	1	BOLT M 6X 14
30	26696-100002	1	NUT M10
31	EPB5554	1	STARTER ASSY, RECOIL
32	114299-76250	1	..RECOIL ASSY
33	114299-76500	1	..CASE, STARTER
34	114299-76520	1	..REEL
35	114399-76530	1	..RATCHET
36	114399-76540	1	..SPRING, SPIRAL
37	160260-76550	1	..WASHER, THRUST
38	114399-76560	1	..SPRING, FRICTION
39	114399-76570	1	..SPRING, RETURN
40	114399-76550	1	..COVER, SPRING
41	114399-76580	1	..PLATE, FRICTION
42	160260-76600	1	..CIRCLIP(E)
44	114399-76620	1	...KNOB, STARTER
45	114299-76630	1	...ROPE, STARTER
46	114299-76590	1	.PULLEY, STARTER
47	114250-76600	1	PLUNGER
48	114250-76610	1	HOLDER, PLUNGER
49	26106-060082	4	BOLT M 6X 8 PLATED
50	26106-060122	3	BOLT M 6X 12 PLATED

Fig. 7 FUEL INJECTION DEVICE



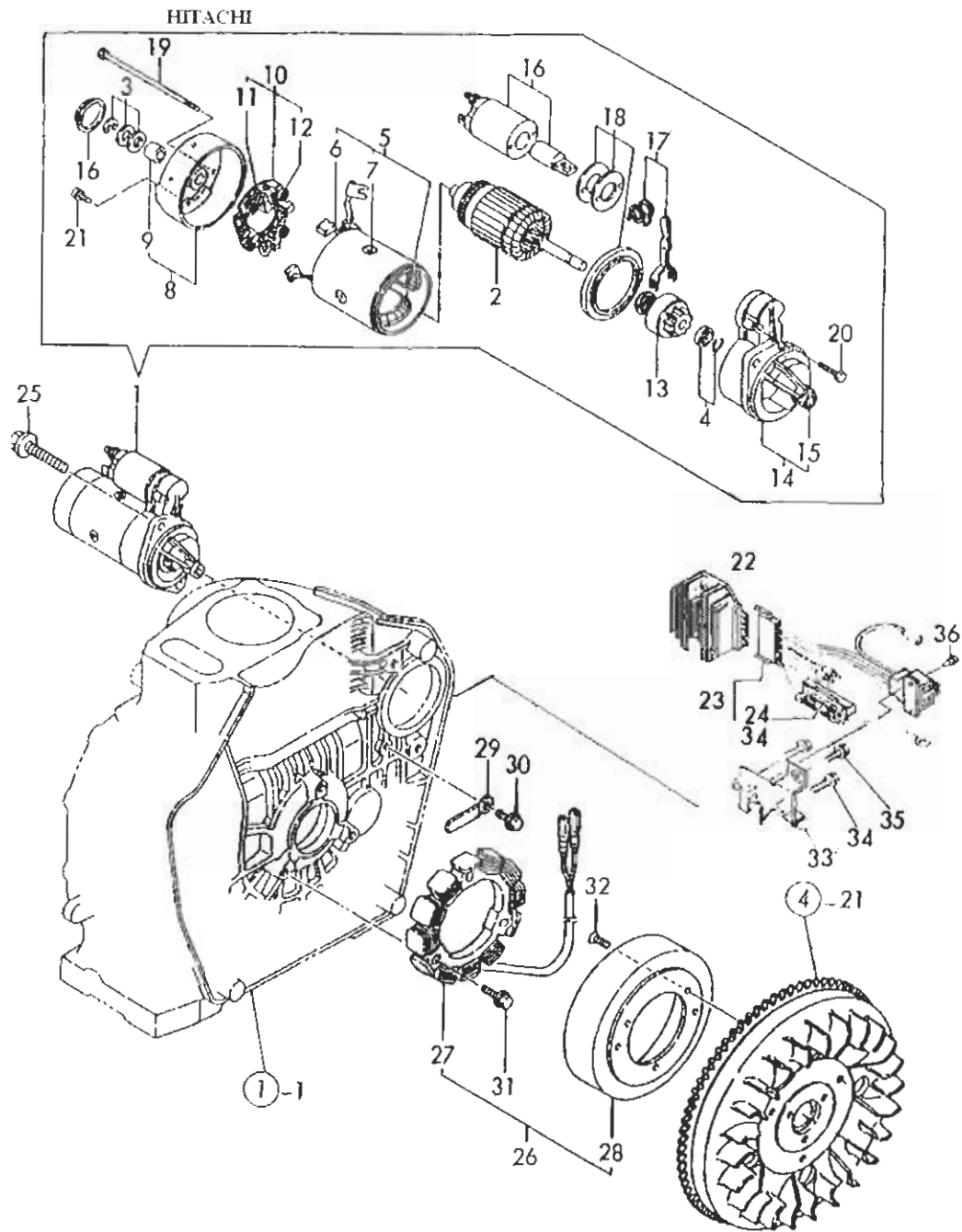
Unit Spec: FIG07. FUEL INJECTION DEVICE L48ARE-S, L48ARE-SE

Ref	Part #	Qty	Description
1	7H770-51100	1	PUMP ASSY. F.INJECT.
2	105546-51020	1	.GASKET
3	114250-51080	1	.PLATE
4	114250-51150	1	.SNAP RING
5	114250-51160	1	.SPRING
6	114250-51200	1	.BODY, FUEL PUMP
8	114250-51180	1	..JOINT
9	114250-51190	1	..O-RING
11	114250-51300	1	.VALVE ASSY, DELIVERY
14	105546-51330	1	.SPRING, DELIV. VALVE
15	114250-51340	1	.HOLDER, F.I.P.DELIVE
16	124550-51350	2	.GASKET, DELIVERY
17	114250-51600	1	.LEVER ASSY, CONTROL
21	114250-51640	1	.SEAT CA>, SPRING
22	114250-51650	1	.SEAT IB), SPRING
23	22351-020006	2	.SPRING PIN 2X 6
24	22351-030008	1	.SPRING PIN 3X 8
25	714250-53101	1	VALVE ASSY, F.INJECT
26	114250-53001	1	.NOZZLE ASSY,F.INJECT
29	114250-53080	1	.NUT, NOZZLE CASE
30	114250-53120	1	.SPRING, NOZZLE
31	114250-53130	1	.SPRING, SEAT
32	114250-53140	1	.PLATE, STOP
33	114250-53210	2	.PIN
34	114250-53300	1	.HOLDER ASSY, NOZZLE
37	114250-53331	1	..PIN, SPRING
38	114250-53400	1	.SHIM PACK

Unit Spec: FIG08. FUEL TANK & FUEL LINE L48ARE-S, L48ARE-SE

Ref	Part #	Qty	Description
1	714250-55701	1	TANK ASSY, FUEL
3	114250-55041	1	.CAP, TANK
4	114250-55050	1	..GASKET
5	114250-55060	1	..SEAL
7	114250-55080	1	..SHEET, FUEL CAP
8	114250-55100	1	.FILTER, FUEL
9	114250-55150	1	.PIPE, GAUGE
10	114250-55201	4	.DAMPER, FUEL TANK
11	124722-59050	2	.CLAMP 9
12	23414-120000	1	.GASKET 12, ROUND
13	23887-120002	1	.PLUG 12,HEX.
14	114250-55120	1	FILTER, FUEL OIL
15	114250-55130	1	.GASKET
16	114250-55211	1	STAY (A)
17	114250-55231	1	STAY (B)
18	114250-55300	1	COCK ASSY, FUEL
19	24341-000150	1	.O-RING 1A S-15.0
20	114252-55800	1	NUT
21	114650-55810	1	BOLT, LIFTING
22	22117-060000	1	WASHER 6
23	22117-080000	1	WASHER 8
24	26106-080452	1	BOLT M 8X 45 PLATED
25	26366-060002	1	NUT M 6
26	26476-060142	2	BOLT M 6X 14
27	106990-44660	2	BAND, HOSE
28	114250-59050	1	PIPE, FUEL OIL
29	124722-59050	2	CLAMP 9
30	114250-59060	1	PIPE, FUEL RETURN
31	114250-59800	1	PIPE, FUEL INJECTION

Fig. 9 STARTING MOTOR & DYNAMO



Unit Spec: FIG09. STARTING MOTOR & DYNAMO L48ARE-SE

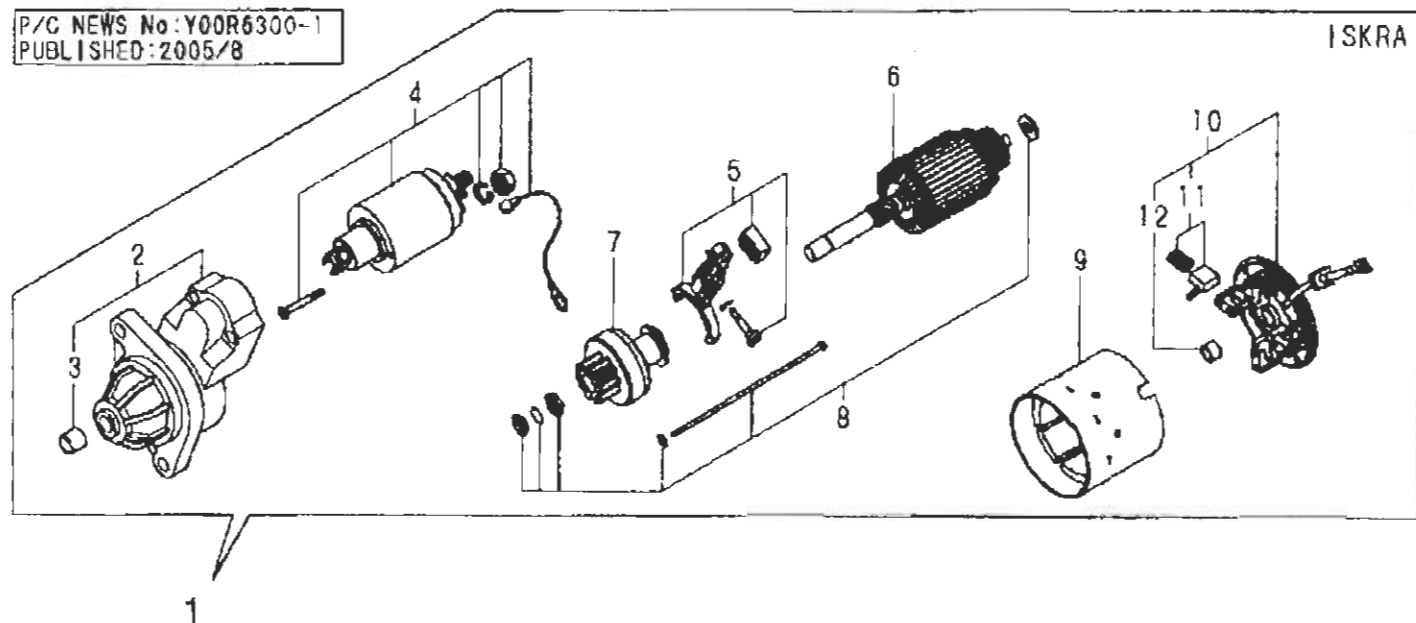
Ref	Part #	Qty	Description
1	114362-77011	1	STARTER MOTOR (D)
2	X211461104	1	.ARMATURE
5	X21148110	1	.WASHER SET, THRUST
4	X21147155	1	.STOPPER SET, PINION
5	X211412105	1	..COIL ASSY, FIELD
6	X21145312	2	..BRUSH (+)
7	X21143215	4	..SCREW, CORE
8	X211473002	1	.COVER, REAR
9	X21145352	1	..METAL
10	X211489001	1	.HOLDER ASSY, BRUSH
11	X21148313	1	..BRUSH (-)
12	X21149314	3	..SPRING, BRUSH
13	X211445508	1	.PINION ASSY
14	X211416603	1	.HOUSING ASSY, GEAR
15	X21145352	1	..METAL
16	X211478006	1	.COVER KIT, DUST
17	X211456013	1	.LEVER KIT, SHIFT
18	X211427501	1	.SWITCH, MAGNETIC
19	X211468005	2	.THROUGH BOLT
20	X21145867	2	.BOLT 6
21	X21142835	1	.SCREW SET
22	119660-77710	1	CURRENT LIMITER
23	114351-77540	1	WIRE, LEAD
24	29411-150000	1	FUSE 15A
25	26106-100302	2	BOLT M10X 30 PLATED
26	114351-78290	1	DYNAMO ASSY. 15A
27	114351-78830	1	.STATOR ASSY.
28	114351-78760	1	.WHEEL, DYNAMO
29	160710-78710	1	CLAMP, CORD
30	26476-060142	1	BOLT M 6X 14
31	26476-060202	3	BOLT M 6X 20
32	26577-060142	3	SCREW M 6X 14
33	114253-77410	1	BRACKET
34	26106-060252	2	BOLT M 6X 25
35	26476-060202	2	BOLT M 6X 20
36	26023-040102	2	SCREW M 4X 10

Y00R6300

Fig.9. STARTING MOTOR & DYNAMO(PREVIOUS)

ISKRA STARTER

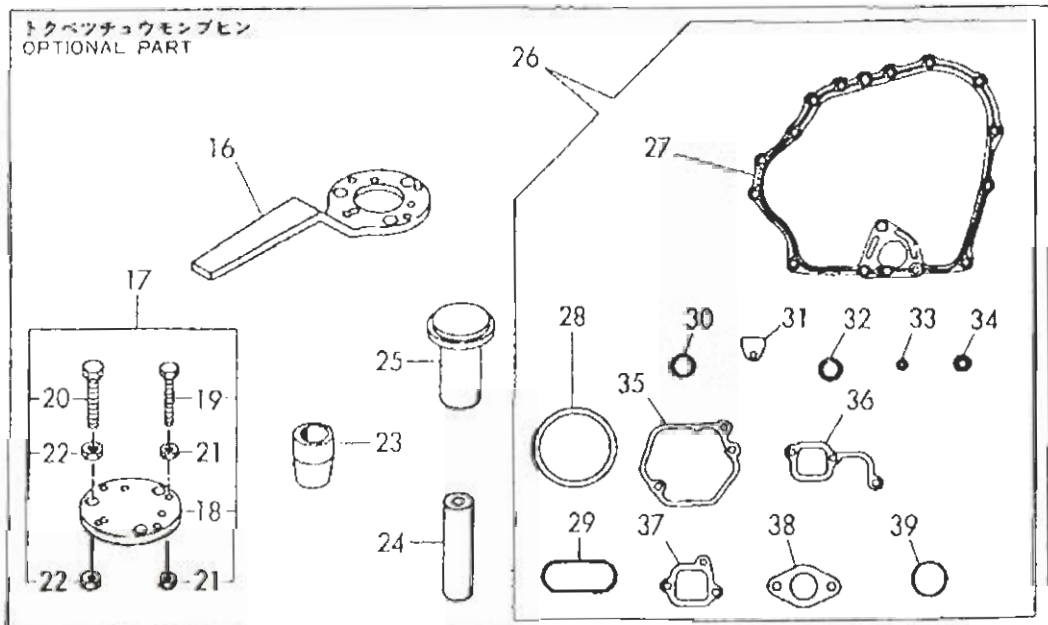
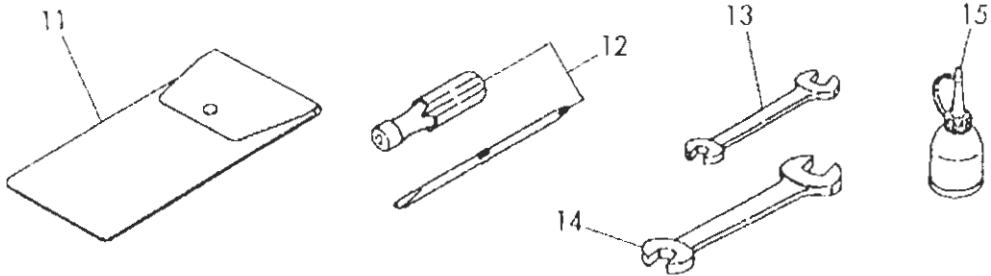
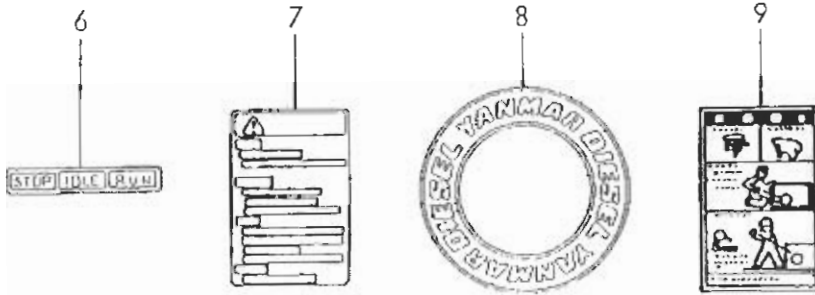
P/C NEWS No:Y00R6300-1
PUBLISHED:2005/8



Unit Spec: FIG09. STARTING MOTOR & DYNAMO(PREVIOUS) L48ARE-S

Ref	Part #	Qty	Description
1	114399-77010	1	STARTER(ISKRA 12V
2	114399-77150	1	.GEAR CASE ASSY
3	114399-77030	1	..BUSH
4	114399-77060	1	.MAGNETIC SWITCH ASSY
5	114399-77180	1	.SHIFT LEVER KIT
6	114399-77110	1	.ARMATURE ASSY
7	114399-77040	1	.PINION CLUTCH ASSY
8	114399-77770	1	.THROUGH BOLT ASSY
9	114399-77130	1	.YOKE ASSY
10	114399-77140	1	.REAR COVER ASSY
11	114399-77160	1	..BRUSH HOLDER ASSY
12	114399-77050	1	..BUSH

Fig. 10 LABEL, TOOL & GASKET SET



Unit Spec: FIG10. LABEL, TOOL & GASKET SET L48ARE-S, L48ARE-SE

Ref	Part #	Qty	Description
1	114250-07090	1	LABEL, AIR COOLED
2	114250-07110	1	LABEL, YANMAR
3	114278-07020	1	LABEL (L40A)
6	183250-07230	1	LABEL, OPERATION
7	114268-07240	1	LABEL, CAUTION
8	114250-07350	1	LABEL, YANHAR DIESEL
9	114268-07350	1	LABEL, HOW TO START
11	114250-92600	1	BAG, TOOL
12	160330-92730	1	SCREWDRIVER
13	28110-100120	1	WRENCH 10X12
14	28110-140170	1	WRENCH 14X17
15	28210-000150	1	FEEDER, OIL
16	114250-92101	1	F.W. LOCKING HANDLE
17	114250-92130	1	REMOVER, FLYWHEEL
18	114250-92121	1	.REMOVER, FLYWHEEL
19	26116-060454	4	.BOLT M 6X 45 PLATED
20	26116-080454	3	.BOLT M 8X 45 PLATED
21	26716-060002	8	.NUT M6
22	26716-080002	6	.NUT M 8
23	114250-92301	1	GUIDE, OIL SEAL
24	114250-92311	1	INSTALLING TOOL
25	114250-92350	1	INSTALLING TOOL
26	714250-92602	1	GASKET SET
2	114770-01340	1	.GASKET, CYL. HEAD
28	114250-01380	1	.O-RING
29	114250-01412	1	.GASKET, CRANK CASE
30	24311-000180	2	.O-RING 1A P-18.0
31	114250-01840	1	.GASKET
32	43400-500490	2	.SEAL WASHER 16
33	114250-11340	2	.SEAL, VALVE STEM
34	114250-11460	1	.GASKET, NOZZLE
35	114250-11310	1	.GASKET, BONNET
36	114250-12200	1	.GASKET, AIR INTAKE
37	114250-12210	1	.GASKET, AIR CLEANER
38	114250-13200	1	.GASKET, MUFFLER
39	103338-32570	1	.O-RING