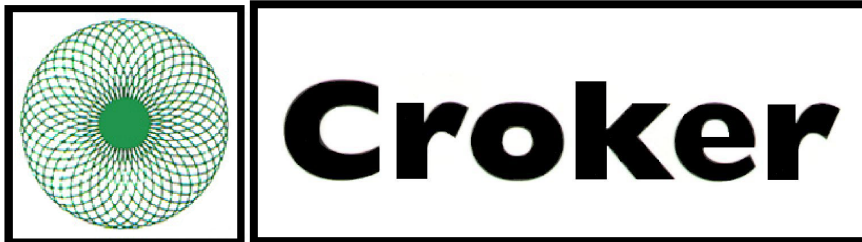


# **WINGET**



## **CUMFLOW RP100XD HD ROTATING PAN MIXER**

# **PARTS & OPERATION MANUAL**

**WINGET LIMITED  
PO BOX 41  
EDGEFOLD INDUSTRIAL ESTATE  
PLODDER LANE  
BOLTON  
LANCS  
BL4 OLS  
Tel: ++44 (0)1204 854650  
Fax: ++44 (0)1204 854663  
crokersales@winget.co.uk  
parts@winget.co.uk  
service@winget.co.uk  
www.winget.co.uk**

# **INDEX**

## **SECTION 1      GENERAL INFORMATION**

- 1.1.      Company Details
- 1.2.      Important Notice
- 1.3.      Mixer Operational and Safety Requirements
- 1.4.      Installation Drawing

## **SECTION 2      INSTALLATION AND OPERATING INSTRUCTIONS**

- 2.1.      Pre Installation Notes
- 2.2.      Installation Instructions
- 2.3.      Operating Instructions

## **SECTION 3      TECHNICAL SPECIFICATION AND MAINTENANCE**

- 3.1.      Technical Specification
- 3.2.      Shutdown Procedure and Maintenance
- 3.3.      Lubrication
- 3.4.      Gear Unit Maintenance

## **SECTION 4      MIXER SPARE PARTS**

- 4.1.      Mixing Pan & Drive
- 4.2.      Mixing Star & Drive
- 4.3.      Mixing Star Assembly
- 4.4.      Mixing Star Lifting Arrangements
- 4.5.      Layout of Guards
- 4.6.      Micro Switch Cam & Proximity Switch
- 4.7.      Electrical Switch Gear
- 4.8.      Decals & Logos

## **SECTION 5      ANCILLIARY EQUIPMENT SPARE PARTS**

- 5.1      Trolley
- 5.2      MoD Additional Parts

## SECTION 6      **ELECTRICAL SYSTEM**

- 6.1                      Electrical Instructions
- 6.2                      Wiring Diagrams

## SECTION 7      **MISCELLEANEOUS**

- 7.1                      Noise Details

The contents of this handbook although correct at the time of publication, may be subject to alteration by the manufacturers without notice and Winget Limited can accept no responsibility for any errors or omissions contained within the following pages. Nor can we accept any liability whatsoever arising from the use of this manual howsoever caused.

Winget Limited operate a policy of continuous product development. Therefore, some illustrations or text within this publication may differ from your machine

Winget Limited can accept no responsibility for incorrectly supplied parts unless the machine serial number, part number and a full description of the items required is given when the order is placed.

### **NOTE**

Imperial fixings (bolts, setscrews, nuts, washers etc) have been progressively changed to Metric. If in doubt as to whether you have a Metric or Imperial fixing please order the metric items listed, i.e. bolt or setscrew and associated or flat and spring washers to replace the existing items

### **NOTE**

Electrical cables particularly those with copper conductors suffer from a condition known as 'relaxation' which may cause wiring to work loose over a period of time, it is recommended that the tightness of wiring connections and terminals are checked following the first month in service.

**OPERATING  
AND  
MAINTENANCE MANUAL**

**SECTION 1**

**GENERAL INFORMATION**

**RP100XD HD**

## **COMPANY DETAILS AND GENERAL INFORMATION**

For any spares or service work, please contact:-

Winget Limited  
P.O. Box 41  
Edgefold Industrial Estate  
Plodder Lane  
Bolton  
Lancs  
BL4 OLS

Telephone No:            ++ 44 (0) 1204 854650  
Facsimile No:            ++ 44 (0) 1204 854663  
'E Mail'                    [crokersales@winget.co.uk](mailto:crokersales@winget.co.uk)  
                                      [parts@winget.co.uk](mailto:parts@winget.co.uk)  
                                      [service@winget.co.uk](mailto:service@winget.co.uk)

### **ORDERING SPARES**

To help us to complete your order promptly and correctly we need:-

- Machine type and serial number
- Description and quantity of parts required
- The full address to which the parts are to be sent

Winget Limited can accept no responsibility for incorrectly supplied parts unless the machine serial number, part number and a full description of the items required is given when the order is placed.

## **IMPORTANT NOTICE**

The CUMFLOW RP100XD HD is a high performance mixer

The following precautions are necessary to obtain the best results and to avoid damage to the MIXING STAR and PAN DRIVE

### **AGGREGATES**

Strict control of graded aggregates must be maintained  
Maximum size 19mm

Oversize lumps of aggregate or rogue materials must be prevented from entering the Pan

### **MIXING STAR BLADES**

They are to a special shape and material to prolong wear life. They should not be modified in any way and only replaced with GENUINE 'CROKER' spares obtained from **WINGET LIMITED**.

A daily check is advisable to ensure that the Blades/Wearing parts are secure and undamaged.

### **MAXIMUM BATCH LOADS**

UNDER NO CIRCUMSTANCES should the Maximum Batch Loads quoted be exceeded nor should the mixer be stopped or re-started when there is a mix in Pan

### **MIXING PAN**

Ensure that the Mixing Pan is rotating concentrically and that the pan base is Horizontal.

### **WARNING**

**THE MANUFACTURER ACCEPTS NO RESPONSIBILITY FOR ANY DAMAGE OR FAILURE RESULTING FROM OPERATIONAL MISUSE OR MALPRACTICE. ANY MODIFICATIONS TO THE MACHINE WILL AFFECT ITS WORKING PARAMETERS AND SAFETY FACTORS. REFER TO THE MANUFACTURERS BEFORE FITTING ANY NON STANDARD EQUIPMENT OR PARTS.**

**THE MANUFACTURERS ACCEPT NO RESPONSIBILITY FOR ANY MODIFICATIONS MADE AFTER THE MACHINE HAS LEFT THE FACTORY, UNLESS PREVIOUSLY AGREED IN WRITING. THE MANUFACTURERS WILL ACCEPT NO LIABILITY FOR DAMAGE TO PROPERTY, PERSONNEL OR THE MACHINE IF FAILURE IS BROUGHT ABOUT DUE TO SUCH MODIFICATIONS, OR THE FITMENT OF SPURIOUS PARTS.**

**RP100XD HD**  
**OPERATIONAL AND SAFETY**  
**REQUIREMENTS**

**PRE-DELIVERY**

- 1.1 Drive coupling alignments, pan and star meshing of pan rack and drive gear.
- 1.2 Operating clearances star blade to pan. Fixed blade to pan wall.
- 1.3 Correct oil level in gearboxes. All grease points charged. Gear teeth greased.
- 1.4 No load test. Correct rotations.

**PRE INSTALLATION**

- 2.1 Check consignment.
- 2.2 Offload equipment using certified lifting gear of suitable capacity, by a competent person (see separate chart for nett weight).

**INSTALLATION**

- 3.1 Refer to contract arrangement and site instructions.
- 3.2 Mixer to be mounted on supports of adequate strength and rigidity to prevent undue vibration when mixing and securely bolted.
- 3.3 Mixer frame to be level on structure, add packers as required.
- 3.4 Check that pan is correctly seated and that pan rack and drive gear are in correct mesh.

**ELECTRICAL SERVICES**

- 4.1 Refer to wiring diagram in Ops Manual. All wiring to be undertaken by competent electrician, it is recommended that the mains electrical supply is provided via an earth leakage circuit breaker. **NOTE:** electrical cables particularly those with copper conductors suffer from a condition known as 'relaxation' which may cause wiring to work loose over a period of time, it is recommended that the tightness of wiring connections and terminals are checked following the first month in service.



## **OPERATION**

- 5.1 Correct oil level in the gearboxes.
- 5.2 Check the Mixing pan clear of loose nuts and bolts to prevent damage to fingers and blades.
- 5.3 Check correct rotation – mixing star – anti clockwise; mixing pan – anti clockwise. All when viewed from the top.
- 5.4 Blade operating clearances adjust in line with maintenance instructions.
- 5.5 Never exceed manufacturer's maximum capacity as detailed in specification.

## **SHUTDOWN**

- 6.1 Prior to any work being carried out mixer to be isolated and physically locked off
- 6.2 Follow the procedures detailed in your companies Health and Safety Policy at all times.
- 6.3 Ensure all storage bins containing materials to be mixed are isolated.

## **MAINTENANCE**

- 7.1 Ensure that all maintenance is carried out in accordance with the Parts and Operating manuals and proprietary manufacturer's specific instruction.
- 7.2 Isolate electrical and other services to the mixer as section 6 above.
- 7.3 Service at recommended intervals.
- 7.4 Use Croker manufactured replacement parts available from WINGET LIMITED.
- 7.5 Ensure all safety guards and interlocks are reinstated prior to operating mixer.

## **GENERAL**

- 8.1 Under on circumstances should the Maximum Batch Loads be exceeded by either weight and volume as stated in Technical Specification.

- 8.2 Mixer star blades to be checked daily for damage.
- 8.3 Pan rim and base wearing plates must be replaced before excessive wear causes distortion.
- 8.4 Ensure mixing pan is rotating concentrically and pan base is rotating in horizontal plane.
- 8.5 Mixer must not be stopped and started when there is mix in the pan.
- 8.6 Refer to the Contract Drawing for scope of supply and the Site instruction notes outlining weights etc.
- 8.7 Refer to Method Statement when installation and commissioning is responsibility of Croker.

**Nett Weights Max (kgs)**

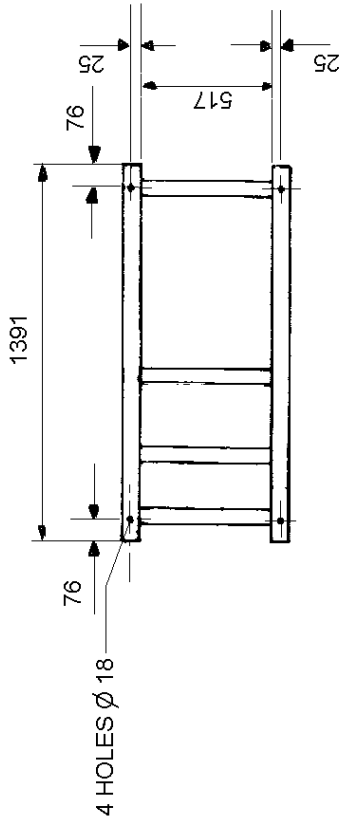
|     |            |      |          |      |
|-----|------------|------|----------|------|
| 9.1 | RP50XD     | 788  | RP1250XD | 4840 |
|     | RP100XD    | 814  | RP1500XD | 4980 |
|     | RP100XD HD | 900  |          |      |
|     | RP200XD    | 1400 | RP3000XD | 7112 |
|     | RP400XD    | 2000 | FP1000   | 4040 |
|     | RP550XD    | 2150 | FP1500   | 4065 |
|     | RP850XD    | 2600 | FP2000   | 4100 |

- 9.2 Refer to technical specification for nett weights of ancillary equipment.
- 9.3 Refer to contract drawing for nett weights of ancillary equipment.

**Miscellaneous**

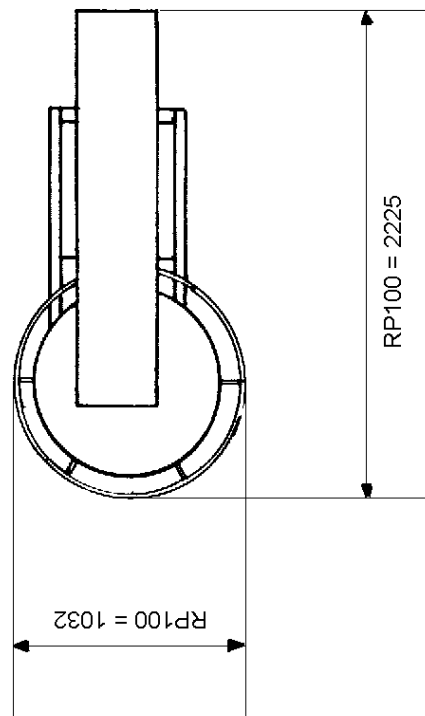
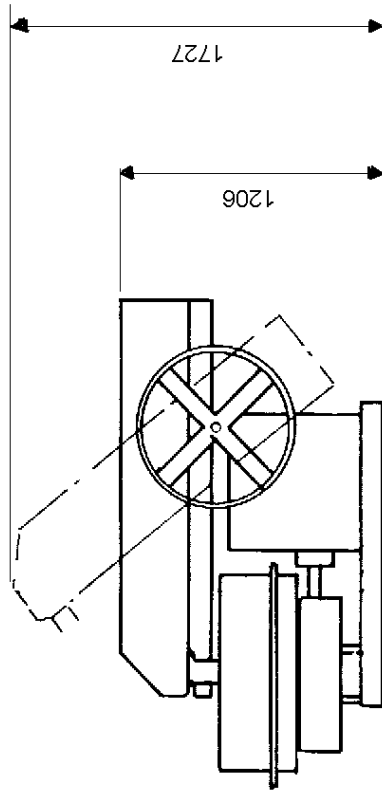
- 10.1 Noise. Measured in accordance with Directive 2000/14 EC:- The noise level did not exceed 104dB(a)LWA

# INSTALLATION DRAWING



## NOTES

- STAR DRIVE MOTOR 3.0 Kw
- PAN DRIVE MOTOR 2.2 Kw
- MACHINE WEIGHT 100XD HD
- APPROX 900 Kg



**OPERATING  
AND  
MAINTENANCE MANUAL**

**SECTION 2**

**INSTALLATION AND OPERATING  
INSTRUCTIONS**

## **PRE-INSTALLATION**

On arrival of the equipment it is advisable to check that all packages listed on the consignment note have been received.

The equipment must be offloaded using certified lifting gear of suitable capacity, by a competent person.

An outline drawing and bolt hold plan is normally sent prior to the despatch of the machine and will enable preparations to be made for the installation. With the `picture` of what the machine will look like when it is assembled, the ancillary equipment dismantled for transport can easily be identified.

## **INSTALLATION**

Please refer to the contract arrangement and site instructions as applicable.

It is recommended that a concrete foundation (to take foundation bolts – not supplied) should be provided for the machine to be mounted on

Before completing the installation, check that the main mixer frame is level with a spirit level. Packings should be inserted as required under the main frame. Check that the pan is seated and that the pan rack and drive gear are in mesh.. Also check that all the blade clearances are in line with the maintenance instructions.

On connecting to the power supply, the wiring diagram must be referred to.

**Note:- it is recommended that the mains electrical supply is taken via an earth leakage circuit breaker.**

The wiring is correctly connected to the motors when the pan and star drive rotate as follows:-

- The mixing pan and mixing star rotate anti-clockwise when looking from the top.

## OPERATING THE MIXER

Prior to start up, the following points should be checked:-

- 1) That there is oil in
  - a) the pan drive gearbox
  - b) the star drive gearbox
  
- 2) The mixing pan should be clear of loose nuts, bolts, spanners, etc as these will damage the fingers and blades.
  
- 3) Check that the blade clearances are correct and if necessary adjust, in line with the maintenance instructions.
  
- 5) To raise the mixing star out of the mixing pan, turn the hand wheel in a clockwise direction until the arm is at 45°
  
- 6) To lower, turn the hand wheel anti-clockwise and lower gently. The mixer will automatically start if the mixing pan is in position. When the mixing pan is removed the mixer cannot be operated as the proximity switches need to sense the pan in position to complete the electrical circuit
  
- 7) On completion of the mixing cycle the raising of the mixing star operates a limit switch which automatically stops all moving parts
  
- 8) The pan can then be removed by hand or with the special lifting trolley available as an option

### IMPORTANT:

After each mix the contents of the pan must be completely discharged. At the end of each period of operation the mixing pan, mixing blades, and fingers, must be washed down to prevent product setting on them and so impairing the efficiency of the machine. **NOTE:- isolate the electrical supply before washing down the mixer and do not aim the water jet directly at the electrical control panel or related switch gear or sensors**

# **OPERATING THE MIXER**

## **SAFETY NOTES**

Never operate the mixer unless you have read and fully understand the contents of the Operators Manual

Never operate the mixer whilst wearing loose fitting clothing

Never reach inside the Pan whilst it is rotating

Never operate any equipment unless you have received adequate training

Cement, certain other minerals and organic compounds can cause skin irritation leading to Dermatitis. Always use Personal Protective Equipment i.e. gloves etc to protect the skin from direct contact. If in any doubt about the materials being used consult your employers COSHH manual

Wear Eye protection to protect your eyes from dust and liquid splashes

Do not attempt to remove the pan single handedly, obtain assistance, use the Pan Trolley (if provided) or use suitable lifting equipment

Do not operate the mixer with any of the guards removed, safety devices or interlocks disconnected. They are there to offer you some protection, ensure they are correctly maintained

Carry out the daily maintenance before operating the mixer and report defects to your supervisors

Oils, Greases and Lubricants are skin irritants and prolonged direct skin contact can cause skin cancer. PPE or barrier creams should be used when carrying out maintenance work, wash your hands on completion

Always dispose of waste oils and lubricants in a proper manner, it is illegal to pour it down drains or bury it. Contact your local authority for a list of authorised disposal sites

Always disconnect the power supply at the mains before carrying out any maintenance work or cleaning the equipment down. Do not turn on the power until everything has dried out

Do not allow waste from the wash down process to enter the public drainage system unless it has been properly filtered



Decals and Instruction Plates are attached to the equipment to warn against hazards and assist in the safe operation of the equipment, if they become damaged or defaced they must be replaced.

## **OPERATING INSTRUCTIONS FOUR WHEEL PAN TROLLEY**

The Four-Wheel Pan Trolley is designed to allow the safe and speedy removal and transportation of the pan and mixed materials to wherever they may be required within the plant. The following instructions should be followed to ensure the Four Trolley is used safely and correctly.

- 1) It is recommended that the Trolley be used only on firm level ground.
- 2) On no account should the laden Trolley be left unattended on anything other than a level surface unless the castors are securely chocked.
- 3) The area around the mixer should be kept free from any build up of waste material.
- 4) Ensure the Pan Lifting Lugs and Hoop attached to the pan are in good condition, secure and free from any build up of waste material.
- 5) Position the Trolley in front of the mixer so that the wheels are equally spaced to each side of the mainframe/chassis.
- 6) Fully raise the Mixing Star by means of the handwheel and allow the pan to come to a complete stop. Manually rotate the pan until two of the Pan Lifting Lugs are at right angles to the mainframe/chassis. This will allow the Trolley, when correctly positioned below the pan to cleanly lift the pan clear of the rack.
- 7) Push the Trolley under the pan until the 'V' support arms on the Trolley are aligned below the Pan Lifting Lugs, brace the Trolley by placing a foot in the rear centre of lower fixed frame and pull back on the handle until the 'V' supports are engaged with the Pan Lifting Lugs, continue pulling back on the handle until it abuts the stops, at which point the pan will be clear of the rack. Manoeuvre both pan and Trolley clear of the mixer. The Trolley complete with the pan can now be carefully pushed or pulled to wherever the mixed material is required. Be aware of the increased inertia inherent in the combined weight of the Trolley, Pan and Material.
- 8) Before tipping the pan to discharge the material it is recommended that the handle is moved fully forward to lower the upper moving frame of the Trolley firmly onto the lower fixed frame. When the material has been discharged the

trolley can be braced as described above, the handle pulled backwards against the stops and the pan transported back to mixer where the pan can be easily and quickly positioned over the rack and lowered into place.

9) On no account must attempts be made to engage the trolley with the mixer mainframe/chassis unless the Star Drive is raised and the rack stationary.

10) Do not 'swing' on the Trolley Handles, doing so may cause the Trolley to become unstable and it may tip backwards especially if the pan is empty causing injury to either yourself or nearby persons.

**OPERATING  
AND  
MAINTENANCE MANUAL**

**SECTION 3**

**TECHNICAL SPECIFICATION  
AND MAINTENANCE**



# **MAINTENANCE OF MIXER**

## **IMPORTANT NOTE:**

Ensure that all maintenance is carried out in accordance with the Parts and Operating Manual and Proprietary Manufacturer's specific instruction.

## **PROCEDURE**

- 1 ISOLATE ELECTRICAL AND OTHER SERVICES TO THE MIXER (see separate section).
- 2 Service at recommended intervals.
- 3 Use Croker manufactured replacement parts available from WINGET LIMITED.
- 4 Ensure all safety guards and interlocks are reinstated prior to operating the mixer.
- 5 Main items of wear (see Section 4).
  - A) Star Blades
  - B) Fixed Blade

Access to mixing pan internals is via the safety interlocks. Each of the above are bolted components and are replaced by simple method and usually achieved in situ without dismantling other components.

- C) Other items prone to less wear are star blade fingers and mixing star. Each can be replaced again in situ but pan covers may require removal to provide the necessary access.

# **MAINTENANCE AND LUBRICATION**

## **NOTE:**

**ALWAYS ENSURE APPARATUS IS ISOLATED FROM MAINS SUPPLY BEFORE COMMENCING MAINTENANCE. IF NECESSARY A 'PERMIT TO WORK' SHOULD BE OBTAINED**

## **DAILY:**

Charge the grease points using Total EP2 Grease (or equivalent)

## **WEEKLY**

Lubricate

|         |  |
|---------|--|
| Racks   | Apply Open Gear Lubricant (or equivalent)  |
| Pinions | Apply Open Gear Lubricant ( or equivalent) |

Inspect and top-up if necessary.

1. Star Gear Box                      Use Total Carter EP460    3.5 litres cap
2. Pan Drive Gear Box              Use Total Carter EP460    3.5 litres cap

## **INSPECT AND ADJUST-MONTHLY**

1. Pan Gear and Pinion, grease with Open Gear Lubricant (or equivalent), as required.
2. Adjust Star Blades, Fixed Blades and Discharge Blade to the following settings, also make sure that Blade Fingers are free in their bearings and that the springs are clear of obstruction.
3. Star Drive Bevel Pinions, remove cover and grease pinions with Open Gear Lubricant or equivalent as required. Check retaining grub screws and keys are tight.

|                            |  |
|----------------------------|--|
| <b><u>MIXING BLADE</u></b> | 3mm clear of pan base. Adjust by moving the blade up or down its finger. |
|----------------------------|--|

|                            |   |
|----------------------------|---|
| <b><u>FIXED BLADES</u></b> | 6mm clear of pan base with the leading edge just touching the pan side. Adjust by moving the blade up or down its finger. |
|----------------------------|---|

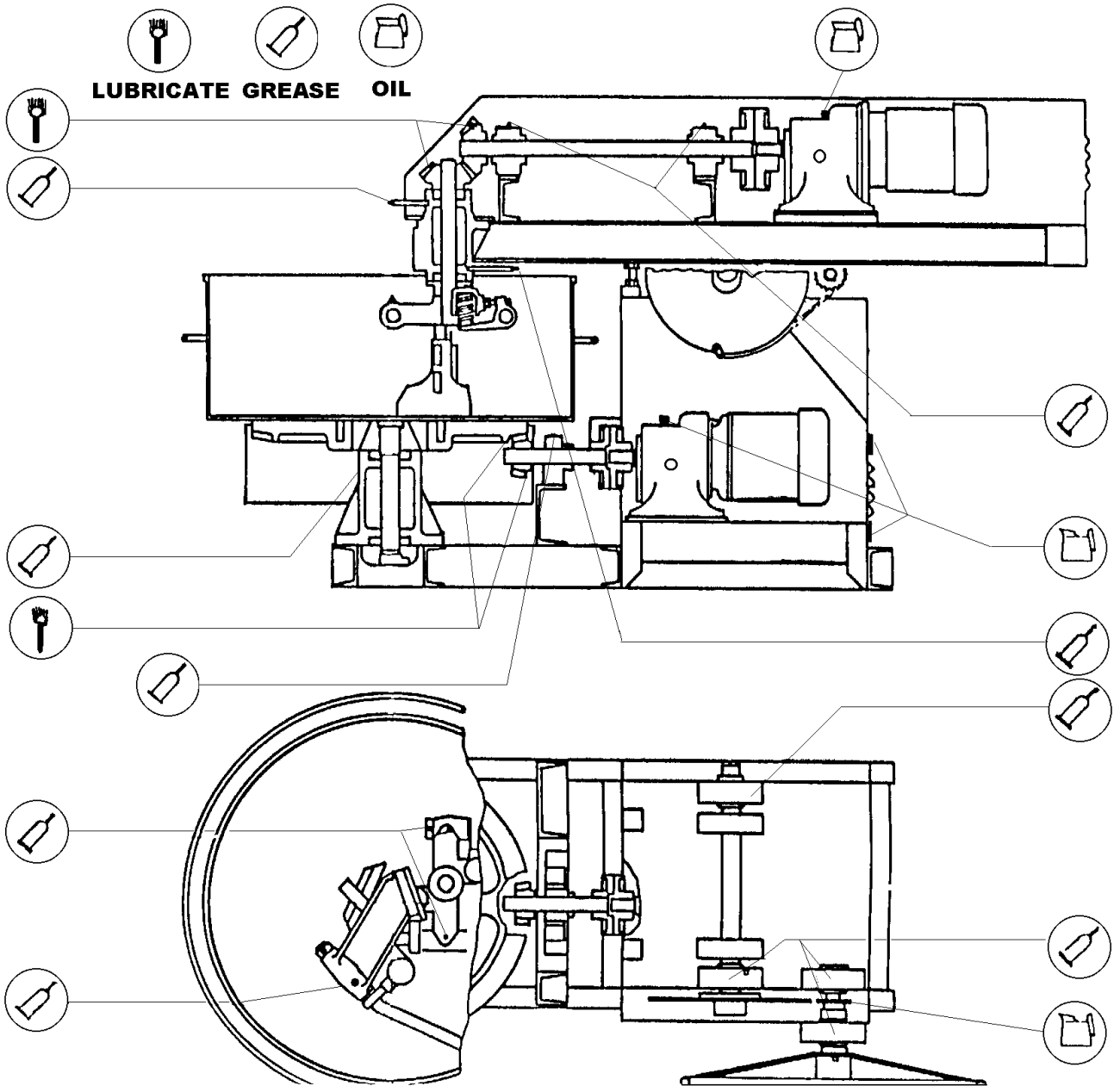
## **MAINTENANCE FOR GEAR UNITS**

### **MAINTENANCE OF THE MOTORS**

The surface of the housing as well as the cover lattice of the fan bonnet should be kept clean in order not to endanger the cooling of the motor with dust and dirt.

Although the bearings of the motor have life time lubrication, the oil in the gearbox of a new unit should be drained after the first **500** hours of operation and the case thoroughly flushed with a light flushing oil before refilling with fresh oil to the correct specification

# LUBRICATION CHART

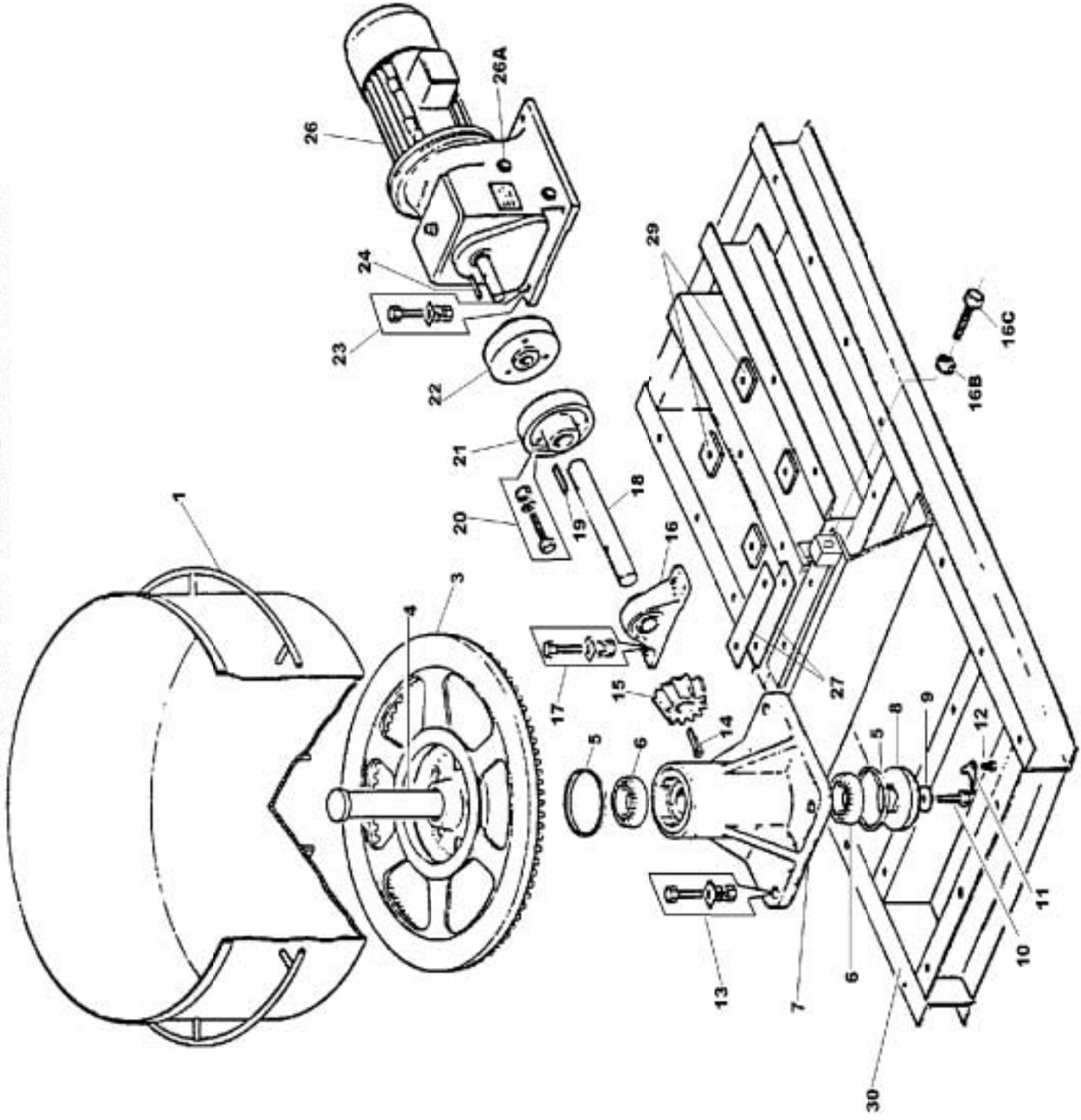




**OPERATING  
AND  
MAINTENANCE MANUAL**

**SECTION 4  
MIXER SPARE PARTS**

# RP100XD HD MIXING PAN & DRIVE



# RP100XD HD MIXING PAN & DRIVE

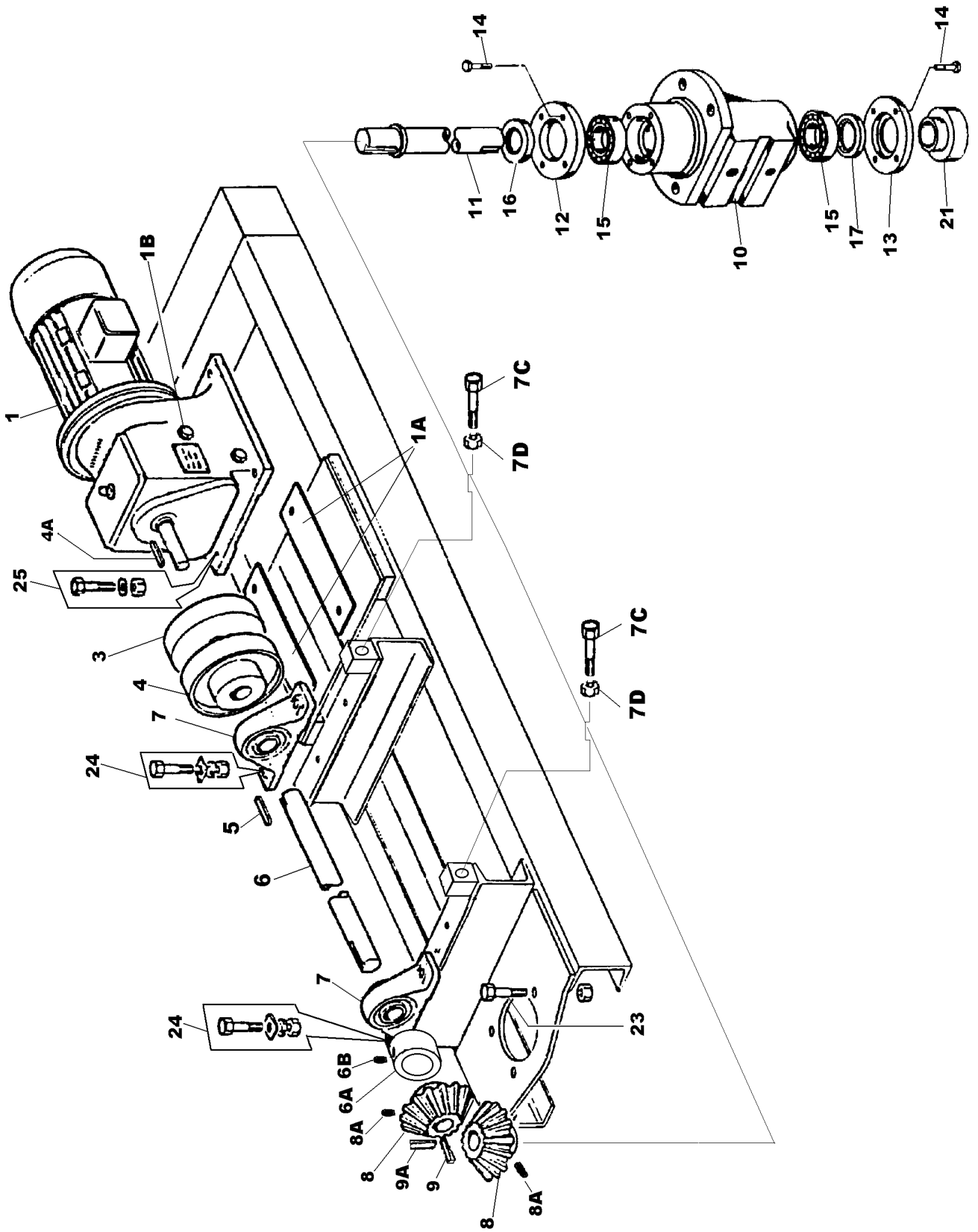
|     |            |   |     |
|-----|------------|---|-----|
| 1   | CR549026   | PAN MIXING HD                           | 1   |
| 3   | CR210136   | PAN RACK                                | 1   |
| 4   | CR520179   | CONICAL SHAFT                           | 1   |
| 5   | CR560006   | FELT SEAL                               | 2   |
| 6   | CR150153   | CONICAL SHAFT BEARING                   | 2   |
| 7   | CR210137   | PAN CONICAL SUPPORT                     | 1   |
| 7A  | 333104020  | NIPPLE GREASE 1/4 BSP STRAIGHT          | 1   |
| 7B  | 176S01     | COVER NIPPLE GREASE                     | 1   |
| 8   | CR210092   | CONICAL END CAP                         | 1   |
| 9   | CR630047   | KEY CAP WASHER                          | 1   |
| 10  | 11S06F     | KEY CAP BOLT M16 X 40                   | 1   |
| 11  | CR530477   | KEY CAP LOCKING PLATE                   | 1   |
| 12  | 68S05C     | LOCKING PLATE CAPSCREW M10 X 20         | 1   |
| 12A | 17S05      | WASHER SPRING M10                       | 1   |
| 13  | 8S06H      | CONICAL BOLT M16 X 60                   | 4   |
| 13A | 61S06      | NUT BINX M16                            | 4   |
| 13B | 267S09     | WASHER FLAT M16                         | 4   |
| 13C | 105S07     | WASHER TAPER M16                        | 4   |
| 14  | CR320021   | BEVEL PINION KEY, GIB HEAD 1/2 X 3/8 X4 | 1   |
| 14A | CR320023   | ALTERNATIVE 1/2 X 7/16 X6 CUT TO SIZE   | 1   |
| 15  | CR460022   | BEVEL PINION                            | 1   |
| 16  | CR150925   | BEVEL PINION SHAFT BEARING              | 1   |
| 16A | 176S01     | COVER NIPPLE GREASE                     | 1   |
| 16B | 7S06       | NUT M16                                 | 2   |
| 16C | 11S06P     | SCREW SET M16 X 80                      | 2   |
| 17  | 8S05J      | BOLT BEARING M12 X 65                   | 2   |
| 17A | 61S05      | NUT BINX M12                            | 2   |
| 17B | 267S07     | WASHER FLAT M12                         | 2   |
| 17C | 105S05     | WASHER TAPER M12                        | 2   |
| 18  | CR520177   | BEVEL PINION SHAFT                      | 1   |
| 19  | CR329015   | KEY FEATHER COUPLING, DRIVEN HALF       | 1   |
| 20  | 79S05F     | BOLT, RIGID COUPLING 1/2 BSW X 2"       | 3   |
| 20A | 253S05     | NUT, RIGID COUPLING 1/2" BSW            | 3   |
| 21  | CR230042   | DRIVEN HALF, RIGID COUPLING             | 1   |
| 22  | CR239018   | DRIVING HALF, RIGID COUPLING            | 1   |
| 23  | 8S05G      | BOLT GEAR UNIT M12 X 55                 | 4   |
| 23A | 61S05      | NUT BINX M12                            | 4   |
| 23B | 267S07     | WASHER FLAT M12                         | 4   |
| 23C | 105S05     | WASHER TAPER M12                        | 4   |
| 24  | CR329049   | KEY FEATHER COUPLING, DRIVING HALF      | 1   |
| 26  | CR229061   | GEAR MOTOR UNIT, PAN DRIVE              | 1   |
| 26A | V2005269   | PLUG OIL LEVEL CLEAR                    | 1   |
| 27  | CR549006   | SHIM PACK BEARING (4 SHIMS PER SET)     | 1   |
| 29  | 555114904  | SHIM SET, GEARED MOTOR UNIT             | A/R |
| 30  | CR269148   | CHASSIS FRAME HD                        | 1   |
| 32  | CR26100661 | BEAM LIFTING (NOT ILLUSTRATED)          | 1   |
| 32A | 8S06F      | BOLT M16 X 50                           | 2   |
| 32B | 267S09     | WASHER FLAT M16                         | 2   |
| 32C | 105S07     | WASHER TAPER M16                        | 2   |
| 32D | 61S06      | NUT BINX M16                            | 2   |

# RP100XD HD MIXING PAN & DRIVE

(2)

|     |          |                    |   |
|-----|----------|--------------------|---|
| 33  | CR640003 | EYE LIFTING        | 4 |
| 33A | 10S05    | WASHER FLAT 1/2"   | 4 |
| 33B | CR241587 | NUT 5/8" BSW NYLOC | 4 |

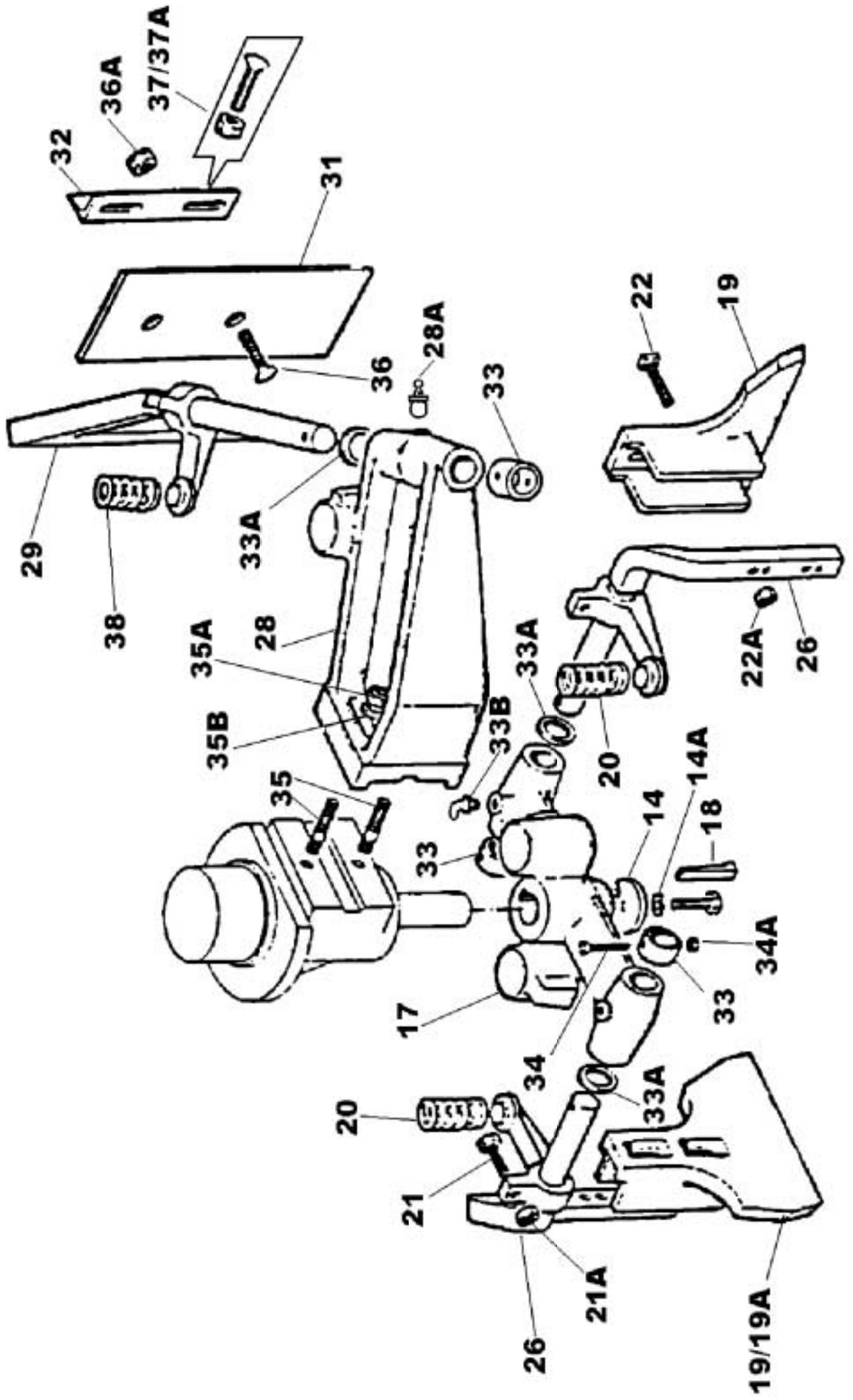
# RP100XD HD STAR DRIVE ASSEMBLY



# RP100XD HD STAR DRIVE ASSEMBLY

|     |           |   |     |
|-----|-----------|---|-----|
| 1   | CR229062  | MOTOR GEAR UNIT STAR DRIVE                      | 1   |
| 1A  | 555114904 | SHIM GEAR MOTOR UNIT                            | A/R |
| 1B  | V2005269  | PLUG OIL LEVEL CLEAR                            | 1   |
| 3   | CR239019  | COUPLING FLEXIBLE DRIVING HALF                  | 1   |
| 3A  | CR239030  | BOLTS & NUTS FOR FLEXIBLE COUPLING              | 6   |
| 3B  | CR239028  | RUBBER BUSH FOR FLEXIBLE COUPLING               | 6   |
| 3C  | CR230047  | BOLT, NUT & BUSH ASSEMBLY FOR FLEXIBLE COUPLING | 6   |
| 4   | CR230044  | COUPLING FLEXIBLE DRIVEN HALF                   | 1   |
| 4A  | 57S05J1   | SCREW GRUB COUPLING M8 X 30 CUP POINT           | 1   |
| 4B  | CR329000  | KEY, DRIVING HALF FLEXIBLE COUPLING             | 1   |
| 5   | CR329046  | KEY, DRIVEN HALF FLEXIBLE COUPLING              | 1   |
| 6   | CR520113  | SHAFT TOP                                       | 1   |
| 6A  | CR529015  | BEVEL PINION LOCKING COLLAR                     | 1   |
| 6B  | 57S05D2   | SCREW GRUB                                      | 2   |
| 7   | CR159006  | BEARING ASSEMBLY TOP SHAFT                      | 2   |
| 7A  | 176S01    | COVER GREASE NIPPLE                             | 2   |
| 7B  | CR549006  | SHIM PACK BEARINGS (4 SHIMS PER SET)            | 2   |
| 7C  | 11S06P    | SCREW SET M16 X 80                              | 4   |
| 7D  | 7S06      | NUT M16   | 4   |
| 8   | CR460024  | GEAR BEVEL                                      | 2   |
| 8A  | 57S05D2   | GRUB SCREW M8                                   | 6   |
| 8B  | 555116600 | PLATE GEAR RETAINING                            | 2   |
| 8C  | 11S04D    | SCREW SET M10 X 30                              | 2   |
| 8D  | 17S05     | WASHER SPRING M10                               | 2   |
| 8E  | 267S06    | WASHER FLAT M10                                 | 2   |
| 9   | CR329046  | KEY FEATHER BEVEL GEAR HORIZONTAL 1/2X5/16X2"   | 1   |
| 9A  | CR329093  | KEY FEATHER BEVEL GEAR VERTICAL 1/2X5/16X3/4"   | 1   |
| 10  | CR210139  | SUPPORT CONICAL STAR                            | 1   |
| 10A | 333104020 | NIPPLE GREASE 1/4 BSP STRAIGHT                  | 2   |
| 10B | 176S01    | COVER NIPPLE GREASE                             | 2   |
| 11  | CR529011  | SHAFT STAR                                      | 1   |
| 12  | CR529012  | UPPER LIP SEAL CARRIER                          | 1   |
| 13  | CR529013  | LOWER LIP SEAL CARRIER                          | 1   |
| 14  | 8S02C     | BOLTS CARRIER M6 X 35                           | 8   |
| 14A | 17S03     | WASHER SPRING M6                                | 8   |
| 15  | CR150149  | BEARINGS STAR SHAFT                             | 2   |
| 16  | CR569008  | SEAL LIP UPPER                                  | 1   |
| 17  | CR569007  | SEAL LIP LOWER                                  | 1   |
| 21  | CR529014  | SPACER COLLAR STAR                              | 1   |
| 23  | 8S06G     | BOLTS STAR CONICAL M16 X 55                     | 4   |
| 23A | 267S09    | WASHER FLAT M16                                 | 8   |
| 23B | 17S08     | WASHER SPRING M16                               | 4   |
| 23C | 7S06      | NUT PLAIN M16                                   | 4   |
| 24  | 8S05M     | BOLTS TOP SHAFT BEARINGS M12 X 80               | 4   |
| 24A | 267S07    | WASHER FLAT M12                                 | 4   |
| 24B | 105S05    | WASHER TAPER M12                                | 4   |
| 24C | 61S05     | NUT BINX M12                                    | 4   |
| 25  | 8S05D     | BOLTS GEAR MOTOR UNIT M12 X 40                  | 4   |
| 25A | 61S05     | NUT BINX M12                                    | 4   |
| 25B | 267S07    | WASHER FLAT M12                                 | 4   |
| 25C | 105S05    | WASHER TAPER M12                                | 4   |
| 26  | CR269150  | STAR ARM CHASSIS/FRAME HD                       | 1   |

# RP100XD HD MIXING STAR ASSEMBLY

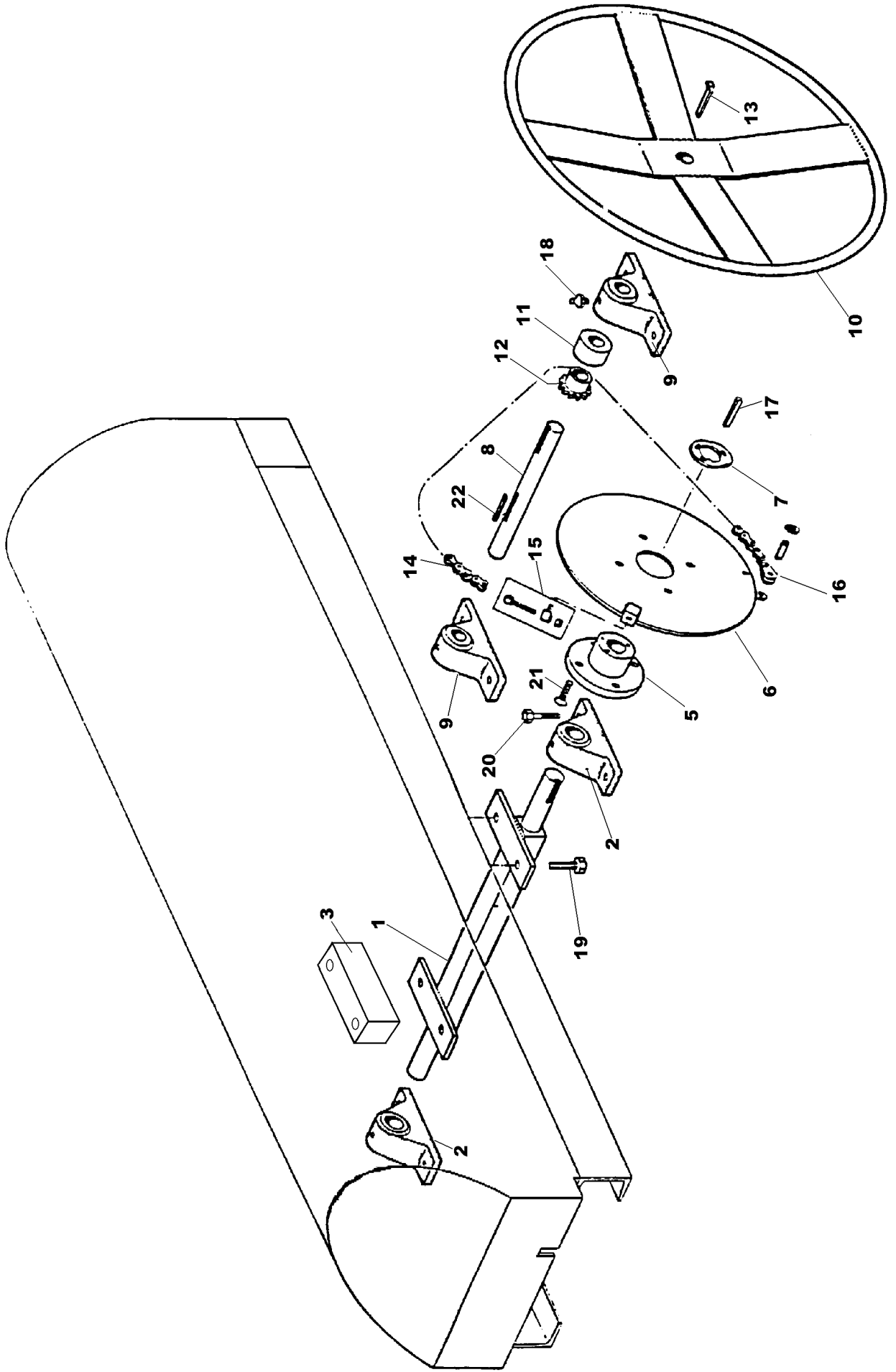


# RP100XD HD MIXING STAR ASSEMBLY

|     |            |   |    |
|-----|------------|---|----|
| 14  | CR529020   | KEY CAP                                       | 1  |
| 14A | 11S05B     | SCREW SET M12 X 20                            | 1  |
| 14B | 17S06      | WASHER SPRING M12                             | 1  |
| 17  | CR210140   | STAR MIXING                                   | 1  |
| 18  | CR329053   | KEY FEATHER MIXING STAR                       | 1  |
| 19  | CR757244   | BLADE STAR CAST, OBSOLETE USE ITEM 19 BELOW   |    |
| 19  | CR219009C  | BLADE STAR CAST, RIBBED                       | 2  |
| 19A | CR219009P  | BLADE STAR POLYUREATHANE, RIBBED              | 2  |
| 19B | CR219009SS | BLADE STAR STAINLESS STEEL, RIBBED            | 2  |
| 19C | CR219009SP | BLADE STAR POLYUREATHANE, NO RIBS, SMOOTH     | 2  |
| 19D | CR219009SC | BLADE STAR CAST, NO RIBS, SMOOTH FINISH       | 2  |
| 20  | CR330061   | SPRING COMPRESSION STAR BLADE                 | 2  |
| 21  | 11S05K     | BOLT ADJUSTING BLADE FINGER M12 X 70          | 2  |
| 21A | 7S05       | NUT M12                                       | 4  |
| 22  | 8S05J      | BOLT STAR BLADE M12 X 65                      | 6  |
| 22A | 267S07     | WASHER FLAT M12                               | 10 |
| 22B | 17S06      | WASHER SPRING M12                             | 6  |
| 22C | 7S05       | NUT M12                                       | 6  |
| 26  | CR260390   | FINGER STAR BLADE                             | 2  |
| 26A | CR269149   | EXTENSION STAR BLADE FINGER (NOT ILLUSTRATED) | 2  |
| 28  | CR210142   | BRACKET FIXED BLADE                           | 1  |
| 28A | 333104020  | NIPPLE GREASE 1/4 BSP STRAIGHT                | 1  |
| 28B | 176S01     | COVER NIPPLE GREASE                           | 1  |
| 29  | CR260415   | FINGER FIXED BLADE                            | 1  |
| 31  | CR539157   | BLADE FIXED HD                                | 1  |
| 32  | CR539158   | ANGLE BRACKET, BLADE FIXED                    | 1  |
| 33  | CR639004   | COLLAR SPACER                                 | 3  |
| 33A | 10S31      | WASHER FLAT                                   | AR |
| 33B | CR289002   | GREASE NIPPLE 1/4 BSP 90' ANGLED              | 2  |
| 34  | 8S04J      | BOLT, COLLAR M10 X 65                         | 3  |
| 34A | 61S04      | NUT BINX M10                                  | 3  |
| 35  | 8S06L      | BOLT M16 X 65                                 | 2  |
| 35A | 17S08      | WASHER, SPRING M16                            | 2  |
| 35B | 267S08     | WASHER FLAT M16                               | 2  |
| 36  | 52S05H     | BOLT SHORT, FIXED BLADE M12 X 40              | 2  |
| 36A | 267S07     | WASHER FLAT M12                               | 4  |
| 36B | 17S06      | WASHER SPRING M12                             | 4  |
| 36C | 7S05       | NUT M12                                       | 4  |
| 37  | 52S04K     | BOLT LONG, FIXED BLADE ANGLE BRACKET M10 X 50 | 2  |
| 37A | 17S05      | WASHER, SPRING M10                            | 2  |
| 37B | 7S04       | NUT M10                                       | 2  |
| 38  | CR330022   | SPRING FIXED BLADE                            | 1  |



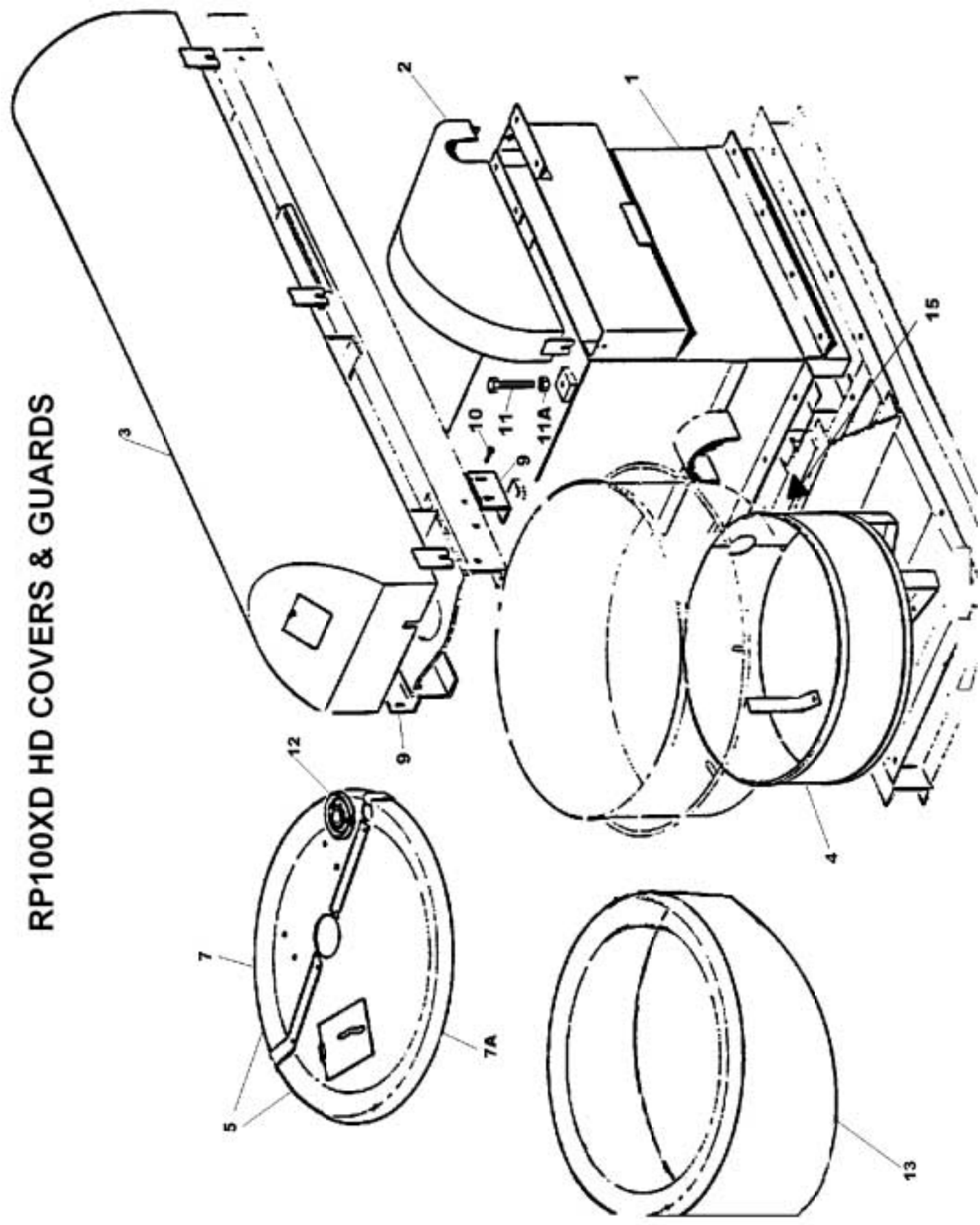
# RP100XD HD MIXING STAR LIFTING ARRANGEMENT



# RP100XD HD MIXING STAR LIFTING ARRANGEMENT

|     |           |  |    |
|-----|-----------|--|----|
| 1   | CR520175  | PIVOT SHAFT                              | 1  |
| 2   | CR190017  | PIVOT SHAFT BEARING                      | 2  |
| 2A  | 333104020 | NIPPLE GREASE 1/4 BSP STRAIGHT           | 2  |
| 2B  | 176S01    | COVER NIPPLE GREASE                      | 2  |
| 3   | CR549025  | SPACER, BEARING-HOUSING                  | 2  |
| 5   | CR630383  | BOSS, PLATE WHEEL                        | 1  |
| 5A  | CR249098  | GRUB SCREW M10                           | 1  |
| 6   | CR260394  | PLATE, WHEEL                             | 1  |
| 7   | CR549009  | CAM, MICROSWITCH (SEE CAM & MICROSWITCH) | 1  |
| 8   | CR520176  | SHAFT, HANDWHEEL                         | 1  |
| 9   | CR190046  | BEARING, HANDWHEEL SHAFT                 | 2  |
| 10  | CR360007  | HANDWHEEL                                | 1  |
| 10A | 57S05D2   | SCREW GRUB (NOT ILLUSTRATED)             | 2  |
| 11  | CR639000  | COLLAR, HANDWHEEL SHAFT                  | 1  |
| 11A | CR249000  | GRUB SCREW M6                            | 1  |
| 12  | CR349005  | PINION, CHAIN                            | 1  |
| 12A | CR249000  | GRUB SCREW M6                            | 1  |
| 13  | CR329050  | KEY, HANDWHEEL                           | 1  |
| 14  | CR200131  | CHAIN                                    | 1  |
| 14A | 134104002 | LINK SPLIT CHAIN                         | 1  |
| 15  | CR200134  | BOLT & BLOCK, DRAW CHAIN                 | 1  |
| 16  | CR200072  | LINK ATTACHMENT, CHAIN END               | 1  |
| 17  | CR329046  | KEY, BOSS PLATE WHEEL                    | 1  |
| 18  | CR289003  | NIPPLE GREASE 1/4 BSP STRAIGHT           | 2  |
| 18A | 176S01    | COVER NIPPLE GREASE                      | 2  |
| 19  | 8S06N     | BOLTS, PIVOT SHAFT M16 X 90              | 4  |
| 19A | 267S08    | WASHER FLAT M16                          | 4  |
| 19C | 61S06     | NUT BINX M16                             | 4  |
| 20  | 8S05E     | BOLT, BEARINGS M12 X 45                  | 8  |
| 20A | 267S07    | WASHER FLAT M12                          | 16 |
| 20B | 61S05     | NUT BINX M12                             | 8  |
| 21  | 52S05G    | BOLT, PLATEWHEEL M12 X 35                | 4  |
| 21A | 17S06     | WASHER SPRING M12                        | 4  |
| 21B | 7S05      | NUT PLAIN M12                            | 4  |
| 21C | CR220505  | MICROSWITCH (NOT ILLUSTRATED)            | 1  |
| 22  | CR329047  | KEY PARALLEL, CHAIN PINION               | 1  |

# RP100XD HD COVERS & GUARDS



# RP100XD HD COVERS & GUARDS

|     |            |   |    |
|-----|------------|---|----|
| 1   | CR53100636 | HOUSING ASSEMBLY PAN DRIVE MOTOR          | 1  |
| 1   | CR53100805 | HOUSING ASSEMBLY PAN DRIVE MOTOR OPP HAND | 1  |
| 1A  | 11S05D     | SCREW SET M12 X 30                        | 26 |
| 1B  | 267S07     | WASHER FLAT M12                           | 26 |
| 1D  | 61S05      | NUT BINX M12                              | 26 |
| 1E  | CR249505   | CATCH ASSEMBLY, DOOR HOUSING              | 1  |
| 1F  | 11S01AA    | SCREW SET M5 X 16                         | 2  |
| 1G  | 11S01A     | SCREW SET M5 X 20                         | 2  |
| 1H  | 267S03     | WASHER FLAT M5                            | 8  |
| 1J  | 17S02      | WASHER SPRING M5                          | 4  |
| 1K  | 7S01       | NUT PLAIN M5                              | 4  |
| 1L  | 11S04B     | SCREW SET M10 X 20                        | 24 |
| 1N  | 267S06     | WASHER FLAT M10                           | 24 |
| 1P  | 61S04      | NUT BINX M10                              | 5  |
| 2   | CR540448   | GUARD, CHAIN GEAR                         | 1  |
| 2   | CR549188   | GUARD CHAIN GEAR, OPPOSITE HAND           | 1  |
| 2A  | 11S04C     | SCREW SET M10 X 25                        | 2  |
| 2B  | 17S05      | WASHER SPRING M10                         | 2  |
| 2C  | 267S06     | WASHER FLAT M10                           | 2  |
| 3   | CR540441   | GUARD STAR DRIVE                          | 1  |
| 3A  | 11S05D     | SCREW SET M12 X 30                        | 6  |
| 3B  | 17S06      | WASHER SPRING M12                         | 6  |
| 3C  | 267S07     | WASHER FLAT M12                           | 6  |
| 4   | CR540447   | GUARD, PAN BASE AND GEVEL GEAR            | 1  |
| 4A  | 11S04C     | SCREW SET M10 X 25                        | 4  |
| 4B  | 267S06     | WASHER FLAT M10                           | 8  |
| 4C  | 17S05      | WASHER SPRING M10                         | 4  |
| 4D  | 7S04       | NUT PLAIN M10                             | 4  |
| 5   | CR549027   | DUST COVER ASSEMBLY                       | 1  |
| 5A  | 267S06     | WASHER FLAT M10                           | 10 |
| 5B  | 17S05      | WASHER SPRING M10                         | 10 |
| 5C  | 7S04       | NUT PLAIN M10                             | 10 |
| 6A  | 11S02A     | SCREW SET M6 X 20                         | 4  |
| 6B  | 267S04     | WASHER FLAT M6                            | 4  |
| 6C  | 17S03      | WASHER SPRING M6                          | 4  |
| 6D  | 7S02       | NUT PLAIN M6                              | 4  |
| 7   | CR549027B  | COVER, DUST REAR                          | 1  |
| 7A  | CR549027A  | COVER, DUST FRONT                         | 1  |
| 9   | CR540442   | CLEAT, DUST COVER TO FRAME                | 2  |
| 9A  | 11S04C     | SCREW SET M10 X 25 CLEAT TO DUST COVER    | 4  |
| 9B  | 267S06     | WASHER FLAT M10                           | 8  |
| 9C  | 17S05      | WASHER SPRING M10                         | 4  |
| 9D  | 7S04       | NUT PLAIN M10                             | 4  |
| 10  | 11S05D     | SCREW SET M12 X 30 CLEAT TO FRAME         | 4  |
| 10A | 267S07     | WASHER FLAT M12                           | 8  |
| 10B | 17S06      | WASHER SPRING M12                         | 4  |
| 10C | 7S05       | NUT PLAIN M12                             | 4  |
| 11  | 8S06R      | SCREW SET STAR FRAME STOP M16 X 120       | 2  |
| 11A | 7S06       | NUT PLAIN M16                             | 2  |
| 12  | CR570019   | SEAL RUBBER, FIXED BLADE ARM              | 1  |
| 13  | CR269286   | GUARD, PAN RIM AND SIDE                   | 1  |
| 13A | 11S04B     | SCREW SET M10 X 20                        | 7  |

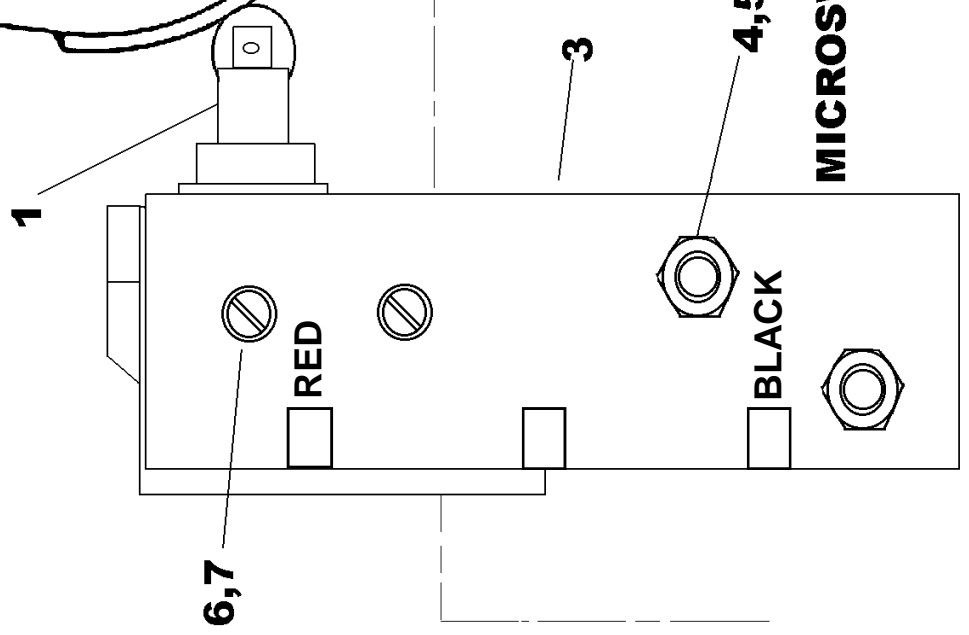
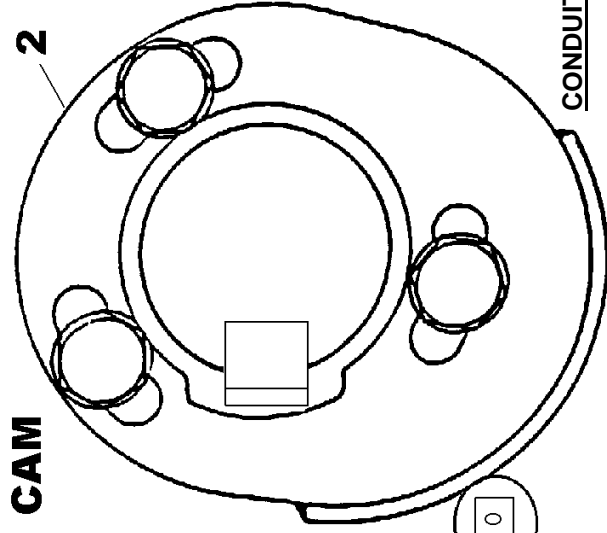
# RP100XD HD COVERS & GUARDS

(2)

|     |          |  |   |
|-----|----------|--|---|
| 13B | 267S06   | WASHER FLAT M10                                | 7 |
| 13C | 17S05    | WASHER SPRING M10                              | 7 |
| 13D | 11S02AA  | SCREW SET M6 X 12                              | 2 |
| 15  | CR549146 | GUARD PINION SHAFT (NOT ILLUS) UP TO S/No 6019 | 1 |
| 15A | 11S03C   | SCREW SET M8 X 25 UP TO S/No 6019              | 4 |
| 15B | 267S05   | WASHER FLAT M8 UP TO S/No 6019                 | 4 |
| 15C | 17S04    | WASHER SPRING M8 UP TO S/No 6019               | 4 |
| 15D | 7S03     | NUT PLAIN M8 UP TO S/No 6019                   | 4 |

# RP100XD HD MICROSWITCH, CAM & SENSOR ARRANGEMENT

ADJUST PROXIMITY SWITCHES SO GAP BETWEEN PAN AND SWITCH IS 1MM-10MM MINIMUM. IF PAN STOPS OR FAILS TO START CHECK ADJUSTMENT



**PAN**

1.0mm-10mm

6,7

RED



BLACK



**MICROSWITCH**

CONDUIT LENGTHS

Sensor furthest away from Control Panel to upper side entry in panel:- CONDUIT 730MM LONG

Sensor nearest to Control Panel to lower side entry in panel:- CONDUIT 540MM LONG

Top Motor (Star Drive) to entry point through housing:- CONDUIT 680MM LONG

Check position of Terminal Box on Motor BEFORE CUTTING CONDUIT, if on top of Motor use 470mm x 2 to feed from motor to housing through coupling and down to R/H side upper entry point on Control Panel

9

10

**SENSOR**

8

# RP100XD HD MICROSWITCH, CAM & PROXIMITY SENSOR

|    |          |                               |   |
|----|----------|-------------------------------|---|
| 1  | CR220505 | MICROSWITCH                   | 1 |
| 2  | CR549009 | CAM                           | 1 |
| 2A | 11S02C   | SCREW SET M6 X 25             | 2 |
| 2B | 17S03    | WASHER SPRING M6              | 2 |
| 2C | 267S04   | WASHER FLAT M6                | 2 |
| 3  | CR531793 | SUPPORT, MICROSWITCH          | 1 |
| 4  | 11S02C   | SCREW SET M6 X 25             | 3 |
| 4A | 267S04   | WASHER FLAT M6                | 6 |
| 4B | 17S03    | WASHER SPRING M6              | 3 |
| 6  | CR243129 | SCREW, CHEESE HEAD 4BA X 1.5" | 2 |
| 7  | CR241632 | NUT, BRASS 4BA                | 2 |
| 8  | CR269146 | BRACKET, PROXIMITY SENSOR     | 2 |
| 8A | 52S05F   | SCREW CSK 12 X 30             | 4 |
| 8B | 267S07   | WASHER FLAT M12               | 4 |
| 8C | 17S06    | WASHER SPRING M12             | 4 |
| 8D | 7S05     | NUT M12                       | 4 |
| 9  | CR229098 | SENSOR PROXIMITY              | 2 |
| 10 | CR229090 | CAP THREADED SENSOR RETAINING | 2 |

# RP100XD HD ELECTRICAL SWITCH GEAR

|    |           |                                    |     |
|----|-----------|------------------------------------|-----|
| 1  | CR229063  | CONTROL PANEL ASSEMBLY C/W KEYS    | 1   |
| 1A | 11S03C    | SCREW SET M8 X 30                  | 4   |
| 1B | 267S05    | WASHER FLAT M8                     | 8   |
| 1C | 17S04     | WASHER SPRING M8                   | 4   |
| 1D | 7S03      | NUT M8                             | 4   |
| 2  | CR229109  | SP20 CONDUIT                       | 4MT |
| 3  | CR229110  | SP20/M20/TYP E B FITTINGS          | 12  |
| 4  | 191902200 | TERMINAL RING 'CRIMP ON TYPE'      | 2   |
| 5  | 144799000 | CABLE 1.5MM SQ G/Y (6491X H07)     | 3MT |
| 6  | 144700100 | CABLE 1.5MM SQ RED (6491X H07)     | 3MT |
| 7  | 144798000 | CABLE 1.5MM SQ BLACK (6491X H07)   | 3MT |
| 8  | CR229103  | CABLE 2.5MM SQ RED (6491X H07)     | 2MT |
| 9  | CR229104  | CABLE 2.5MM SQ YELLOW (6491X H07)  | 2MT |
| 10 | CR229105  | CABLE 2.5MM SQ BLUE (6491X H07)    | 2MT |
| 11 | 191902200 | TERMINAL RING 'CRIMP ON TYPE' BLUE | 6   |
| 12 | CR229114  | LOCK RINGS 20MM                    | 3   |
| 13 | CR229115  | REDUCER 25MM MALE/20MM FEMALE      | 2   |
| 14 | CR229111  | GALVANISED COUPLER 25MM            | 1   |



# RP100XD HD DECALS AND LOGOS

## 1 CROKER CUMFLOW RP100XD HD

2

|   |            |            |
|---|------------|------------|
| <b>WINGET</b> WINGET LIMITED<br>200, Bury St. (Industrial Estate) Bury, Lancs. BL9 9JW<br>Tel: 01256 353535 Fax: 01256 353536 |            |            |
| Model   | _____      |            |
| Serial No.  | _____      |            |
| Engine No.  | _____      |            |
| Capacity  | Mass (kg)  | _____      |
| SRO No.   | Power (kW) | _____      |
| Year Of Manuf.  | Eng. (rpm) | Drum (rpm) |

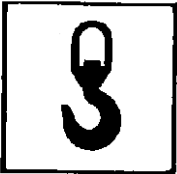
© 2008 WINGET

A CROKER GROUP COMPANY

4



5



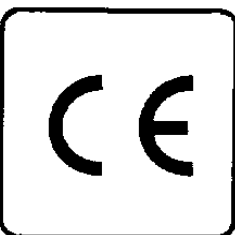
6



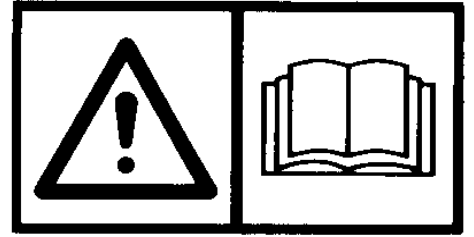
7



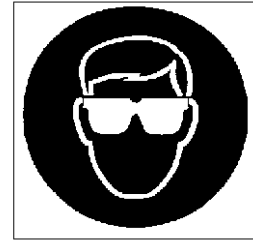
8



9



10



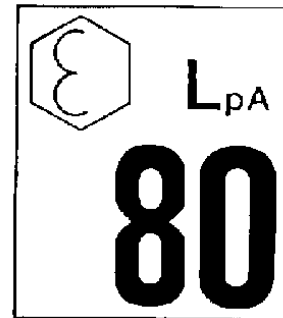
11

**SAFETY WARNING**

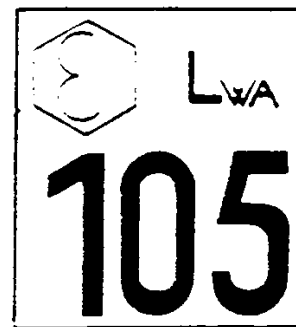
1. Before starting this machine, the operator should be familiar with the operating instructions issued by the manufacturer.
2. The manufacturer's rated capacity must never be exceeded.
3. Before carrying out any maintenance servicing, or greasing, always ensure that the engine has been switched off. Never work on a machine while it is running.

W231016/01

12



13



# RP100XD HD DECALS AND LOGOS

|    |            |                          |   |
|----|------------|--------------------------|---|
| 1  | CR85100807 | DECAL RP100XD HD         | 2 |
| 2  | V2003037   | PLATE SERIAL NUMBER      | 1 |
| 3  | 101S05D    | RIVET POP                | 4 |
| 4  | V2003039   | DECAL 'WINGET' MEDIUM    | 2 |
| 5  | V2003665   | DECAL SLING POINT        | 4 |
| 6  | V2003598   | DECAL BRITISH MADE       | 2 |
| 7  | V2004307   | DECAL ELECTRICAL HAZARD  | 2 |
| 8  | V2004223   | DECAL 'CE' MARK          | 1 |
| 9  | V2004229   | DECAL OPERATORS HANDBOOK | 2 |
| 10 | V2004744   | DECAL EYE PROTECTION     | 2 |
| 11 | 504694600  | DECAL SAFETY             | 1 |
| 12 | V2004130   | DECAL NOISE 80 LPA       | 1 |
| 13 | V2003575   | DECAL NOISE 105 LWA      | 1 |

**OPERATING  
AND  
MAINTENANCE MANUAL**

**SECTION 5  
ANCILLARY EQUIPMENT  
SPARE PARTS**

**PAGE INTENTIONALLY BLANK**

# RP100XD HD FOUR WHEEL PAN TROLLEY

## FROM MARCH 2001 ONWARDS

|  |            |                                    |   |
|--|------------|------------------------------------|---|
| 1  | CR26100858 | FRAME LOWER                        | 1 |
| 1A   | CR47100860 | INSERT BLANKING 60 X 40            | 2 |
| 2  | 11S04G     | STOP SCREWS M10 X 45               | 2 |
| 3  | 7S04       | NUT M10                            | 4 |
| 4  | CR26100857 | FRAME UPPER                        | 1 |
| 4A   | CR47100861 | INSERT BLANKING 50 X 25            | 2 |
| 5  | CR26100850 | PIVOT BAR FRONT                    | 2 |
| 6  | 59S11      | NUT NYLOC M16                      | 4 |
| 7  | 267S09     | WASHER FLAT M16                    | 4 |
| 8  | CR53100849 | PIVOT BAR REAR C/W HANDLE CARRIERS | 2 |
| 9  | 59S11      | NUT NYLOC M16                      | 4 |
| 10   | 267S09     | WASHER FLAT M16                    | 4 |
| 11   | CR53100852 | PLATE PICKUP, PAN SUPPORT          | 2 |
| 12   | 11S03C     | SCREW SET UPPER M8 x 25            | 4 |
| 13   | 17S04      | WASHER SPRING M8                   | 4 |
| 14   | 267S05     | WASHER FLAT M8                     | 4 |
| 15   | 11S03B     | SCREW SET LOWER M8 x 20            | 4 |
| 16   | 17S04      | WASHER SPRING M8                   | 4 |
| 17   | CR53100846 | HANDLE TROLLEY                     | 1 |
| 18   | 8S03E      | BOLT HANDLE RETAINING M8 x 45      | 2 |
| 19   | 61S03      | NUT BINX M8                        | 2 |
| 20   | CR449001   | CASTOR SWIVEL FRONT                | 2 |
| <b>INDIVIDUAL WHEEL ITEMS AVAILABLE AS FOLLOWS</b> |            |                                    |   |
| 20A  | CR449002   | WHEEL ASSEMBLY C/W BEARING         | 1 |
| 20B  | CR449005   | WHEEL CENTRE BUSH/SPACER           | 1 |
| 20C  | 11S05P     | BOLT M12 x 80                      | 1 |
| 20D  | 61S05      | NUT BINX M12                       | 1 |
| 21   | 11S04D     | BOLT CASTOR RETAINING M10 x 30     | 8 |
| 22   | 267S06     | WASHER FLAT M10                    | 8 |
| 23   | 17S05      | WASHER SPRING M10                  | 8 |
| 24   | 7S04       | NUT M10                            | 8 |
| 25   | CR449000   | CASTOR FIXED REAR                  | 2 |
| <b>INDIVIDUAL WHEEL ITEMS AVAILABLE AS FOLLOWS</b> |            |                                    |   |
| 25A  | CR449002   | WHEEL ASSEMBLY C/W BEARING         | 1 |
| 25B  | CR449005   | WHEEL CENTRE BUSH/SPACER           | 1 |
| 25C  | 11S05P     | BOLT M12 x 80                      | 1 |
| 25D  | 61S05      | NUT BINX M12                       | 1 |
| 26   | 11S04D     | BOLT CASTOR RETAINING M10 x 30     | 8 |
| 27   | 267S06     | WASHER FLAT M10                    | 8 |
| 28   | 17S05      | WASHER SPRING M10                  | 8 |
| 29   | 7S04       | NUT M10                            | 8 |
| 30   | V2004636   | DECAL WINGET SMALL                 | 2 |

# RP100XD HD ADDITIONAL PARTS REQUIREMENT MoD

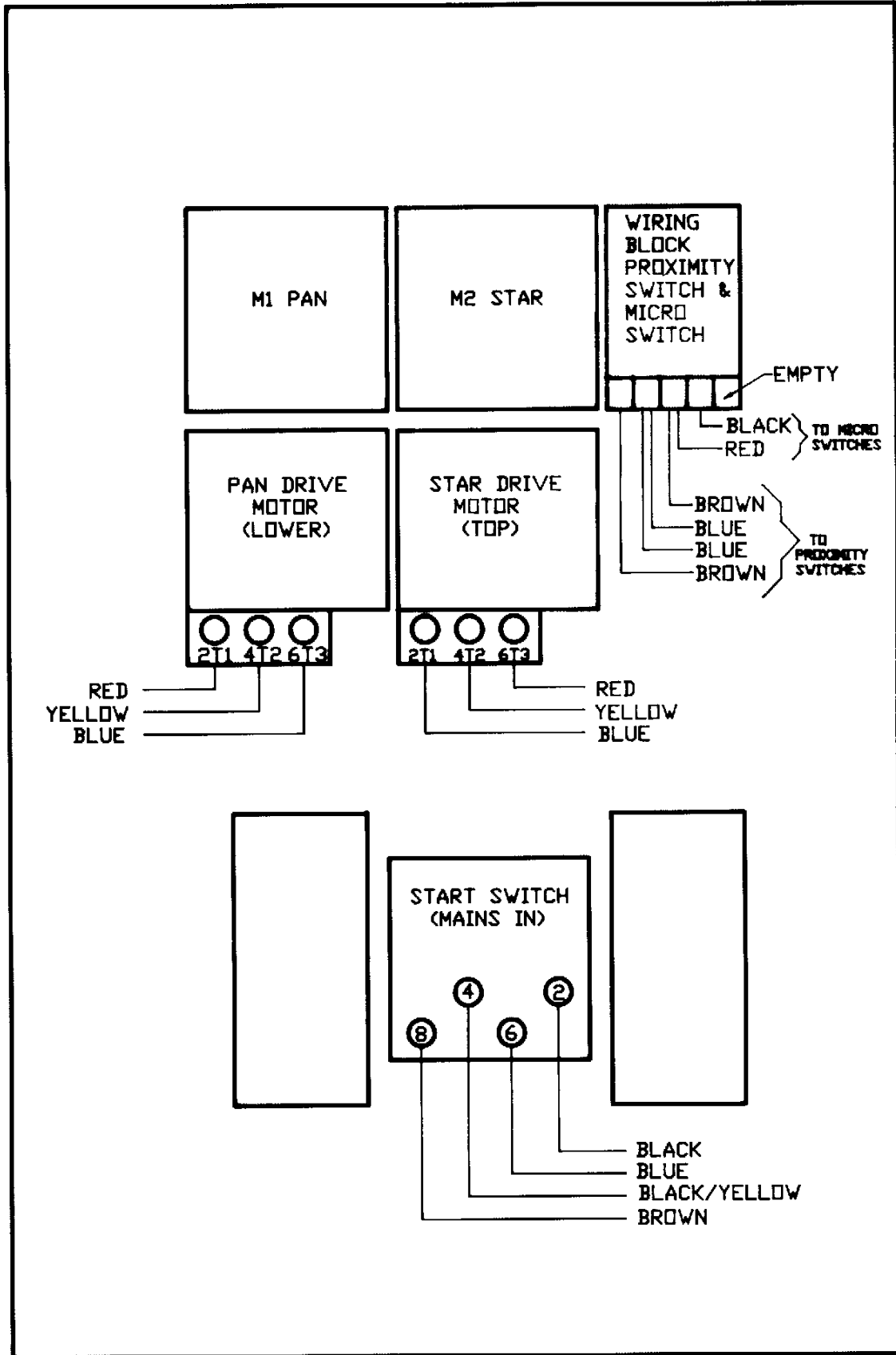
ADDITIONAL PARTS LISTED BELOW ARE NOT ILLUSTRATED

|   |            |                                  |   |
|---|------------|----------------------------------|---|
| 1 | V2005120   | PLATE - NOMENCLATURE/INSCRIPTION | 1 |
| 2 | 101S05D    | RIVET POP                        | 4 |
| 3 | V2005132   | TOOL KIT                         | 1 |
| 4 | CR54100774 | TOOL BOX                         | 1 |
| 5 | 11S04B     | SCREW SET M10                    | 2 |
| 6 | 17S05      | WASHER SPRING M10                | 2 |
| 7 | 7S04       | NUT M10                          | 2 |

**OPERATING  
AND  
MAINTENANCE MANUAL**

**SECTION 6  
ELECTRICAL SYSTEM**

# CONTROL BOX WIRING LAYOUT





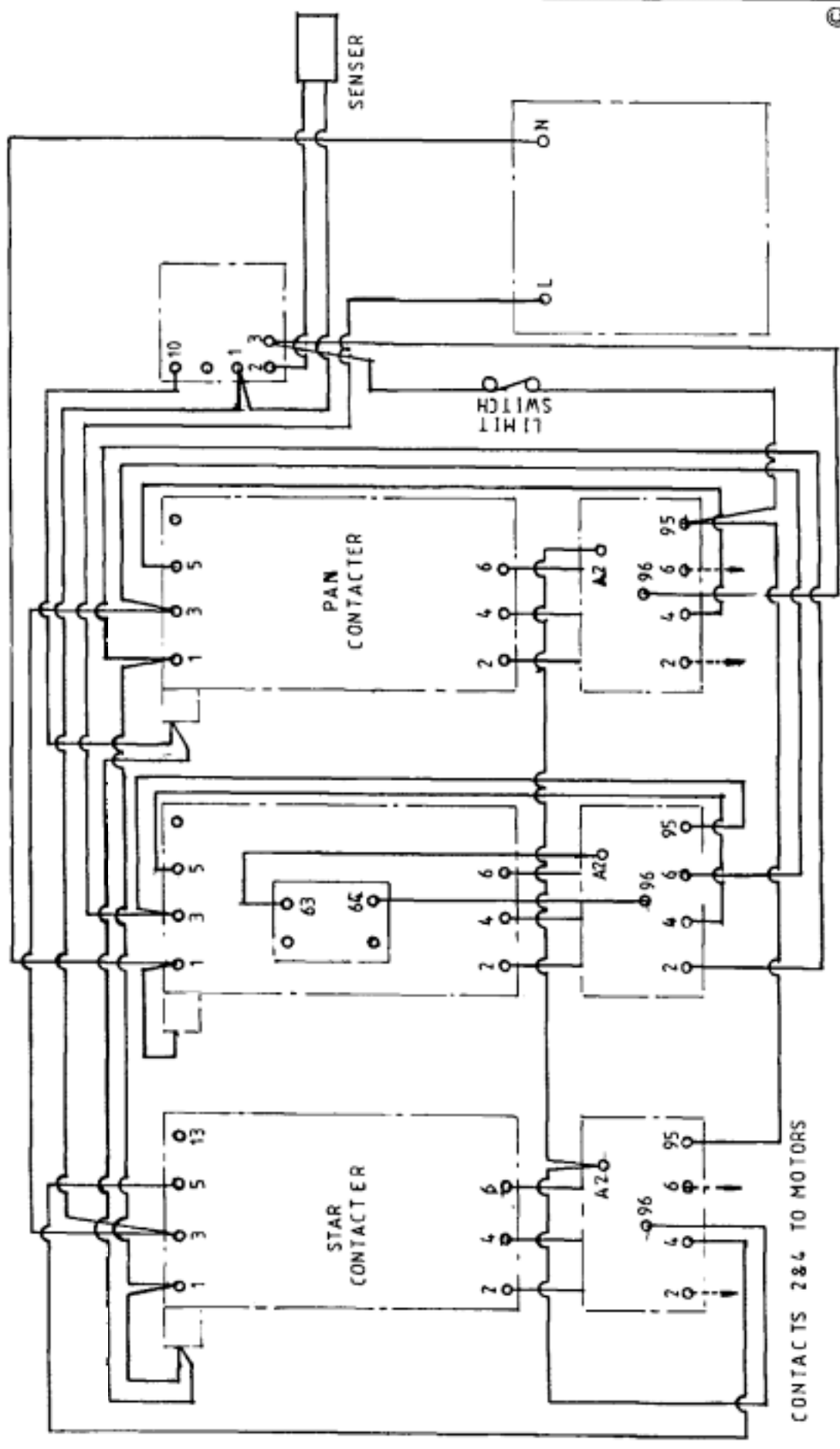
IF IN DOUBT ASK

DIMENSIONS IN MILLIMETRES

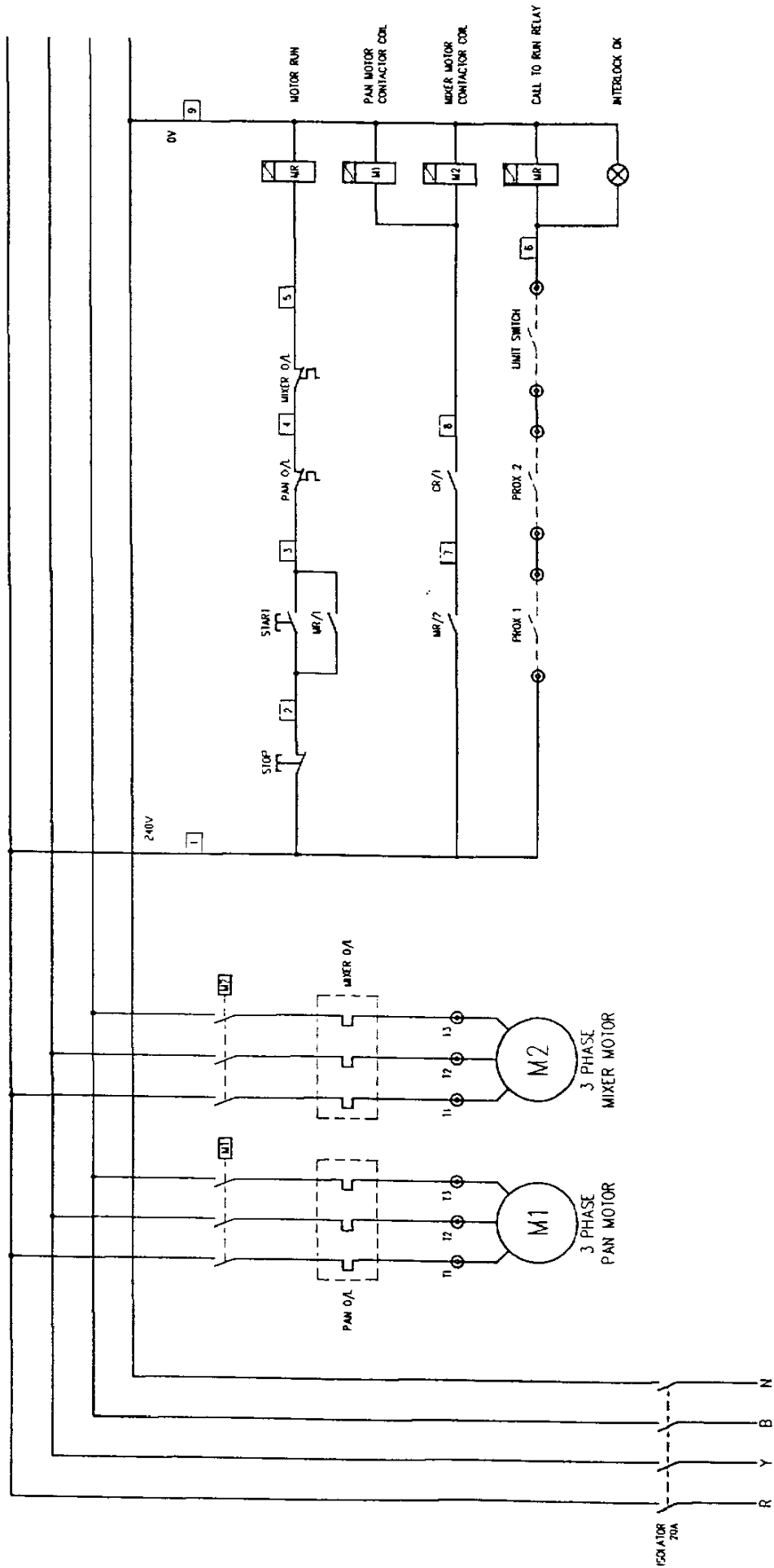
THIRD ANGLE PROJECTION

DO NOT SCALE DRAWING

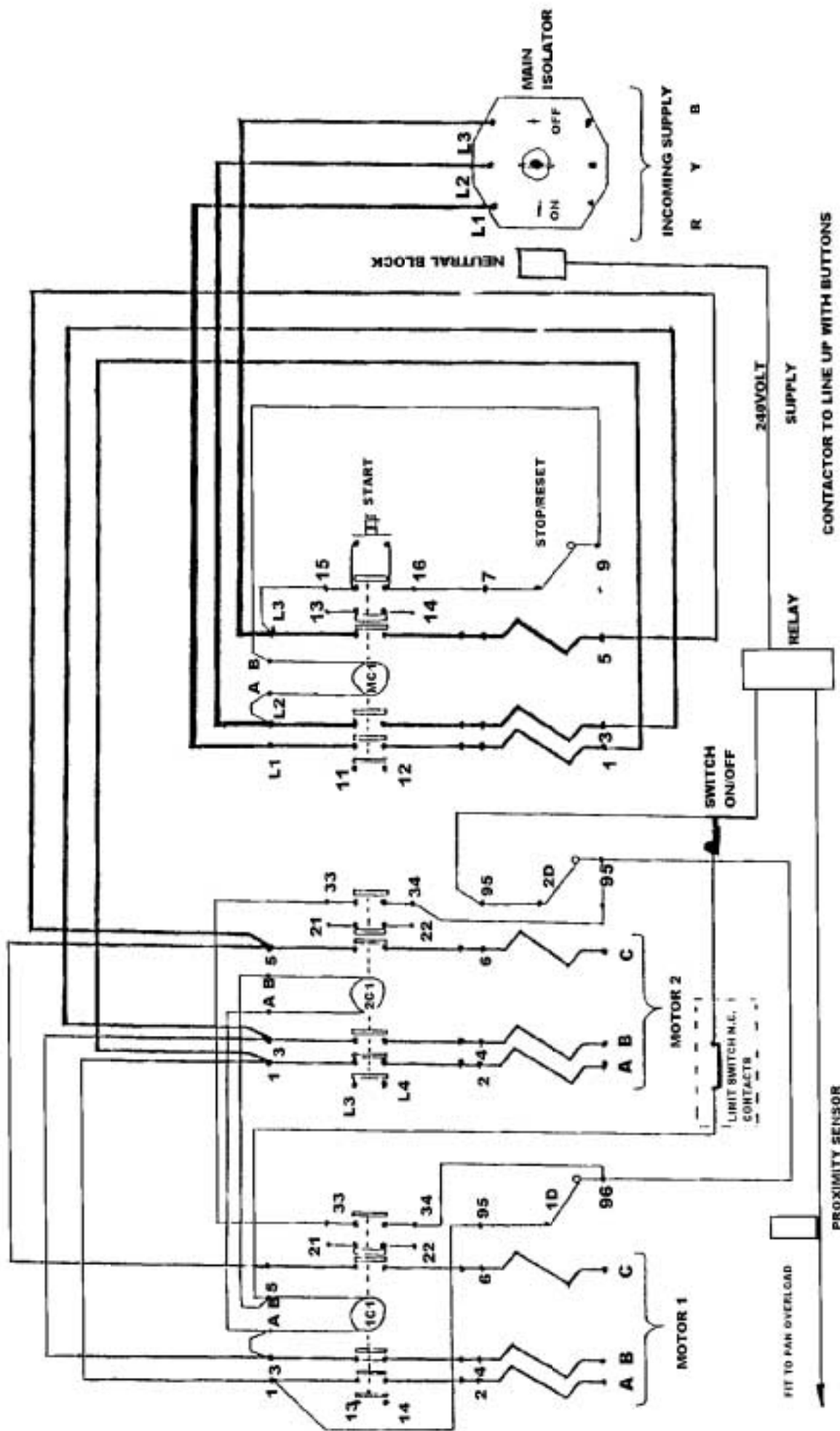
REMOVE ALL BURRS AND SHARP EDGES



|   |          |                |      |
|---|----------|----------------|------|
| Croker plant  |          | WINGET LIMITED |      |
| TITLE   |          | DRAWING NUMBER |      |
| RP 100 SINGLE   |          | 22-9066        |      |
| PHASE - SCHEMATIC   |          |                |      |
| SCALE   | CHECKED  | APPROVED       |      |
| DRAWN   |          |                |      |
| THE DRAWING IS THE SOLE PROPERTY OF "CROKER PLANT"  |          |                |      |
| WITHOUT THEIR WRITTEN PERMISSION IT MUST NOT BE COPIED, REPRODUCED OR IN ANY MANNER FOR FUTURE USE. |          |                |      |
| TOLERANCES UNLESS OTHER WISE STATED   |          |                |      |
| DEC. PLACES 2   |          |                |      |
| GENERAL TOL. 2  |          |                |      |
| ANGULAR FINISHES IN ACCORDANCE WITH BS 1134   |          |                |      |
| SURFACE FINISHES IN ACCORDANCE WITH BS 1134   |          |                |      |
| MATERIAL  | HARDNESS | FINISH         | DATE |
|   |          | JM             |      |
| ISSUE   | REVISED  | REVISION       | DATE |
| 1   |          |                |      |



| ISSUE | MOD. BY | DATE     | MODIFICATION             | DRAWN    | DATE     | PROJECT TITLE                     |
|-------|---------|----------|--------------------------|----------|----------|-----------------------------------|
|       |         |          |                          | I.T.     | 13-06-96 | CROKER PLANT                      |
|       |         |          |                          | CHECKED  |          | DRAWING TITLE                     |
| B     | I.T.    | 14-06-96 | MAINS POWER SHOWN        | APPROVED |          | RP100                             |
| A     |         |          | FIRST ISSUE FOR APPROVAL |          |          | JOB No. H2636<br>DRG No. H2636-01 |
|       |         |          |                          |          |          | ISSUE                             |
|       |         |          |                          |          |          | B                                 |



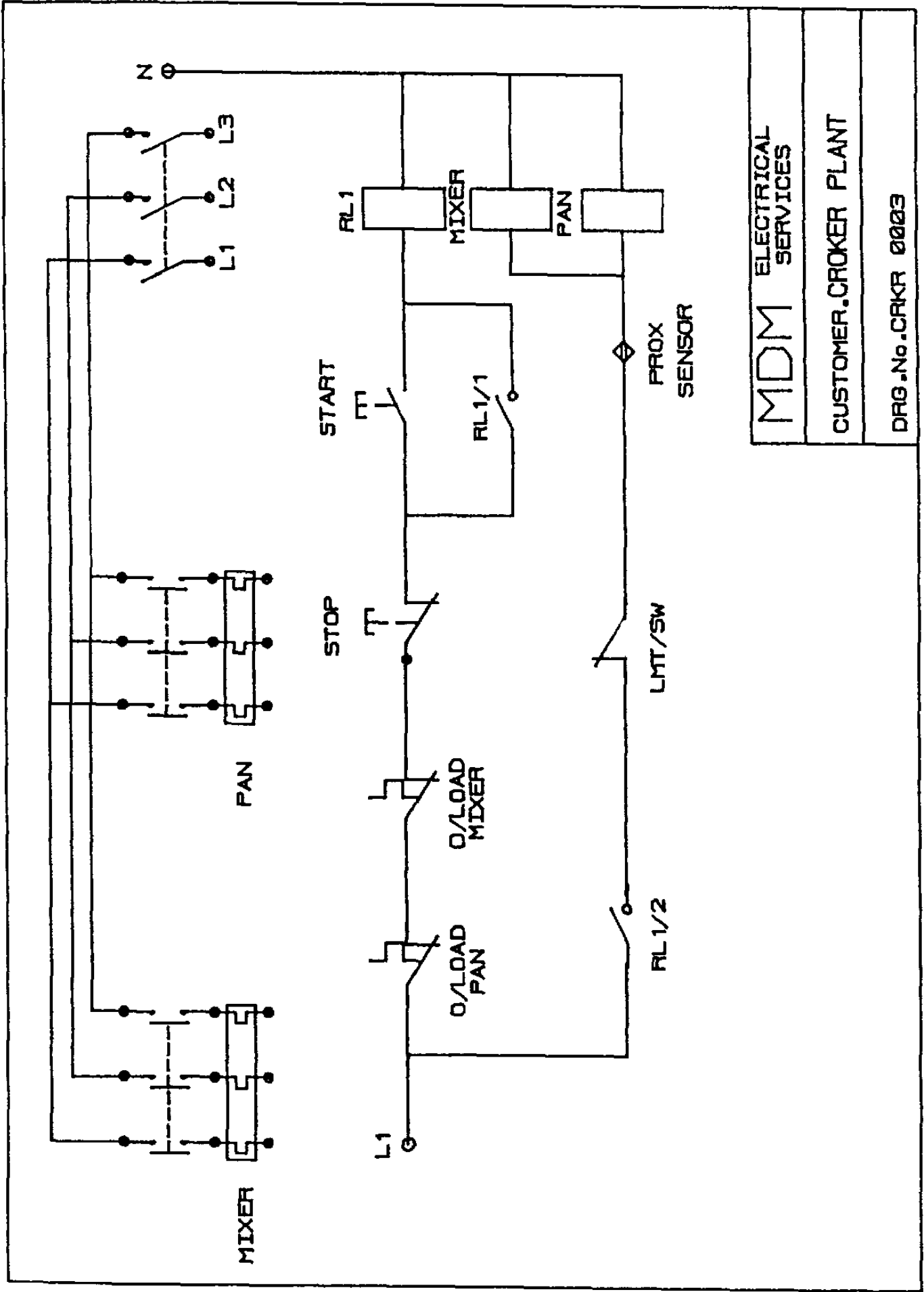
CONTACTOR TO LINE UP WITH BUTTONS

RELAY

PROXIMITY SENSOR

N.B. PAN & STAR BOTH ROTATE IN AN ANTI-CLOCKWISE DIRECTION WHEN LOOKING DOWN FROM THE TOP

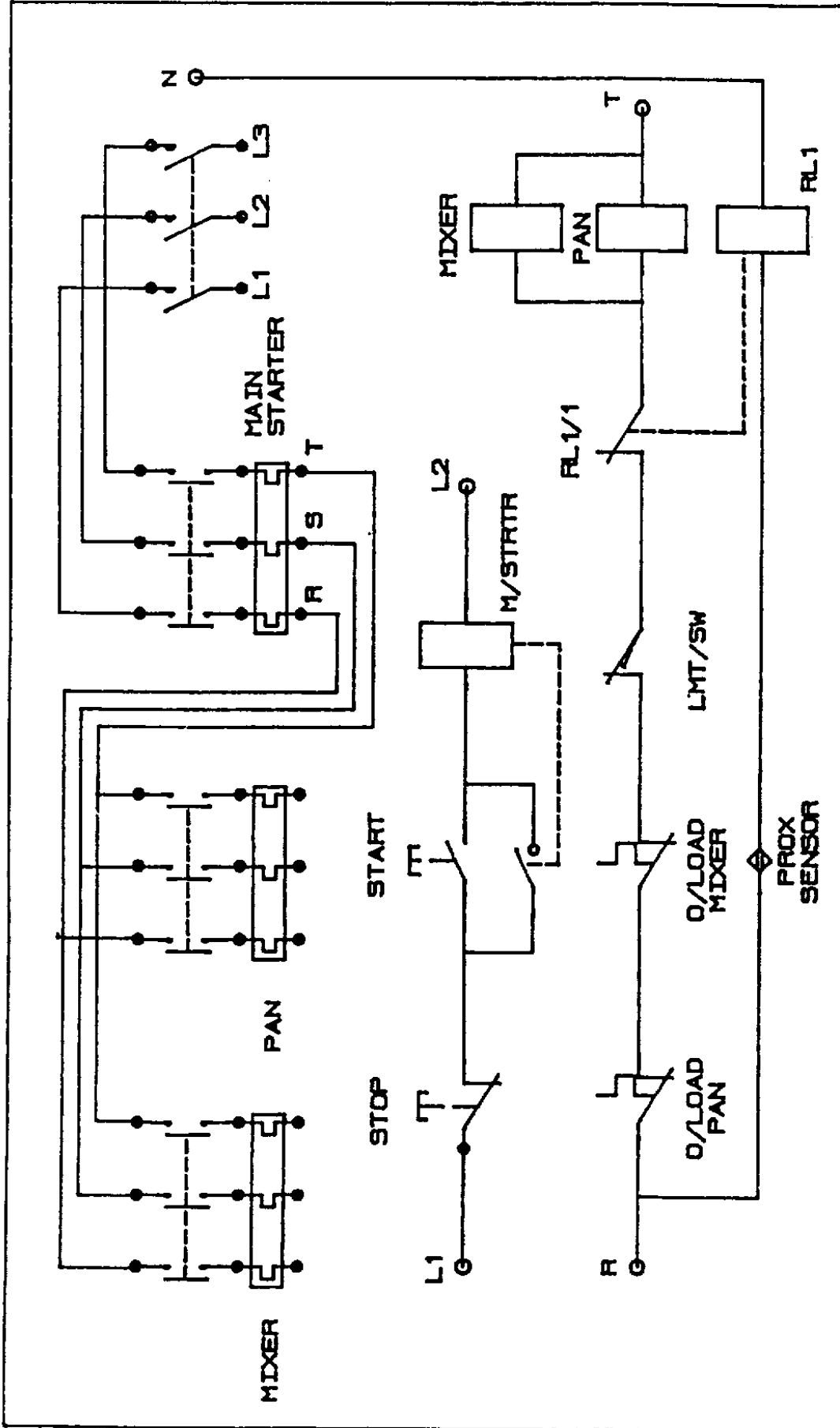
### RP100XD HD CONTROL BOX WIRING DIAGRAM



MDM ELECTRICAL SERVICES

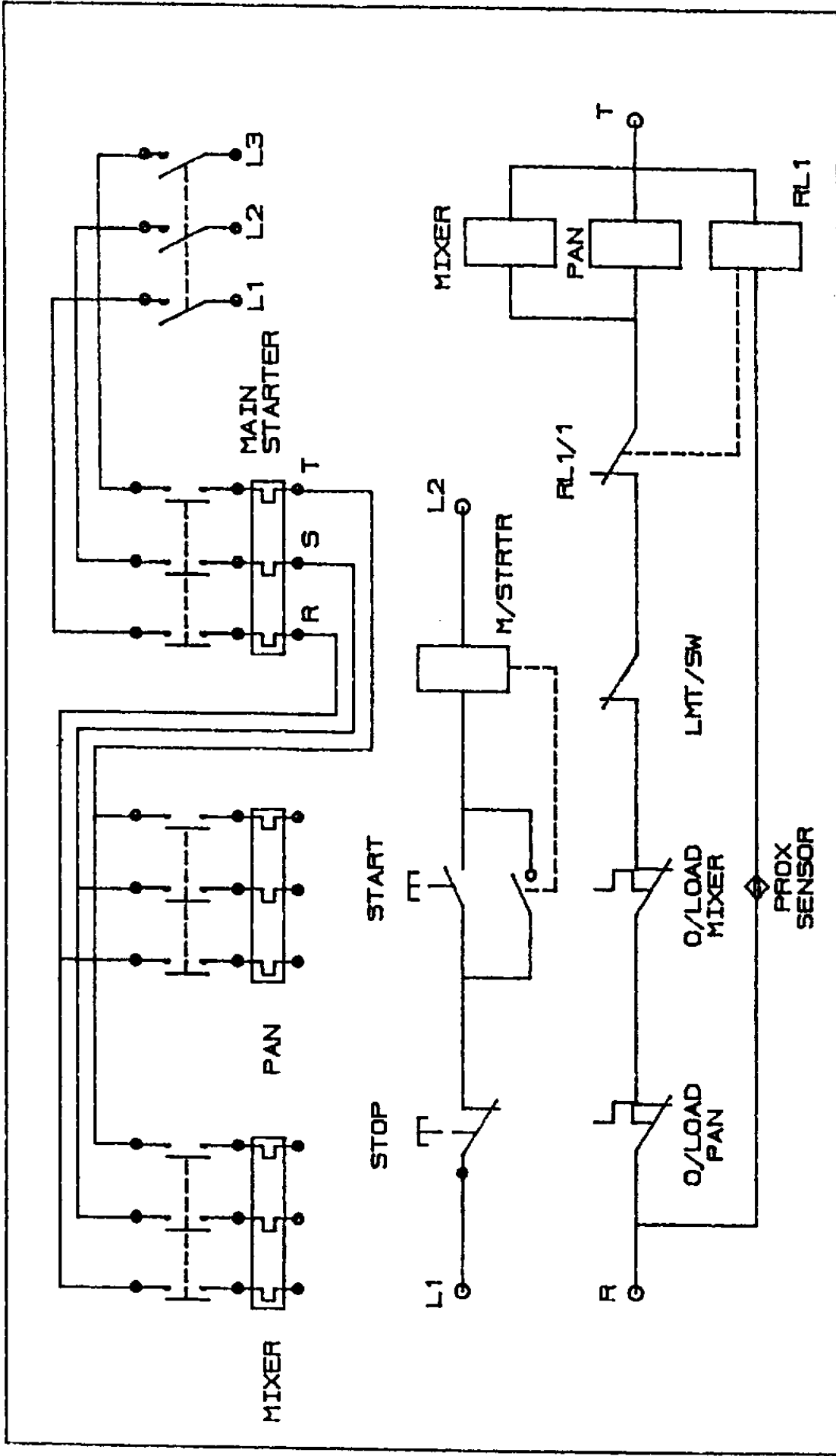
CUSTOMER: CROKER PLANT

DRG. No. - CRKR 0003



MDM ELECTRICAL SERVICES  
 CUSTOMER CROKER PLANT  
 DRG No. CKR 0001

415V 4 WIRE SUPPLY



220 VOLT 3 WIRE SUPPLY

MDM ELECTRICAL SERVICES

CUSTOMER CROKER PLANT

DRG No. CKR 0001

**OPERATING  
AND  
MAINTENANCE MANUAL**

**SECTION 7**

**MISCELLANEOUS**

## 7.1 NOISE DETAILS

Measured in accordance with Directive 2000/14 EC the noise did not exceed 104dB(a)LWA