

WINGET

2WD SITE DUMPERS
2B RANGE

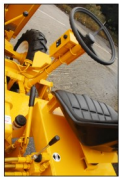


2B1500, 2B2000

Please note: dumpers illustrated are shown with optional lighting kits.



Twin heavy duty tip rams (optional hydraulic tip on 2B1500)



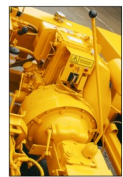
ergonomic driving position with tilting driver's seat



rugged front axle with totally enclosed oil immersed multi-plate disc brakes



Lister Petter air cooled diesel engine



heavy duty newage gearbox



rugged and reliable beam axle with heavy duty steering arms

Tough and versatile, Winget 2B Range quality site dumpers offer reliability and simplicity for a long, productive life

Two models available: 2B1500 and 2B2000

Standard machine includes hand start engine, 2B2000 has hydraulic tipping, 2B1500 has gravity tipping or hydraulic tipping

Available with optional extras: electric start engine, hydraulic tipping (on 2B1500 model), lighting kit

High strength, rigid, welded steel chassis

Rugged and durable Lister Petter air cooled diesel engine - available with hand or electric start

Hydraulically operated skip with twin rams -standard on 2B2000 model and optional on 2B1500

Heavy duty front axle with oil immersed multi-plate disc brakes which maintain braking efficiency and minimise maintenance in site conditions

WINGET is an ISO9001 accredited company

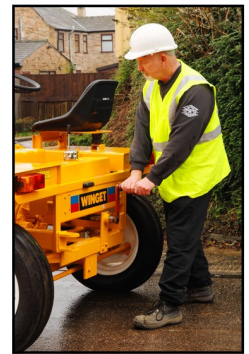
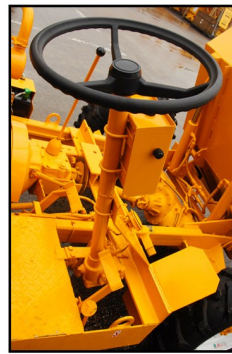
Efficient after sales spares service through Winget's worldwide distributor network

2B1500
2B2000

2B1500
2B2000

WINGET
2WD DUMPERS
2B RANGE

WINGET
2WD SITE MIXERS
2B RANGE



Chassis: Robust, high strength welded steel chassis.

Engine: 2B1500 - Lister Petter TR1 air cooled diesel 6.7kW (9hp) @ 1800rpm. Hand start (electric start optional).
2B2000 - Lister Petter TR2 air cooled diesel 11.6kW (15.3hp) @ 1800rpm. Hand start (electric start optional).

Transmission: Heavy duty constant mesh gearbox with 3 forward and 1 reverse gears, driving through a single dry-plate clutch (8"), coupled by a heavy-duty propeller shaft to the front axle.

Axes and Brakes: Front axle - heavy duty double reduction with fully floating half shafts. Totally enclosed oil immersed multi-plate disc brakes. Rear axle - robust centrally pivoted steel axle.

Skip: Durable steel plate with reinforced skip edges for maximum durability.

Steering: Low maintenance hydraulic power steering via heavy duty orbital steer valve and rear axle mounted steering cylinder. Turning circle 2B1500 - 7.35m, 2B2000 - 8.35m.

Hydraulics: Direct drive gear pump with high capacity return line filtration. Hydraulic tank has lockable filler cap.

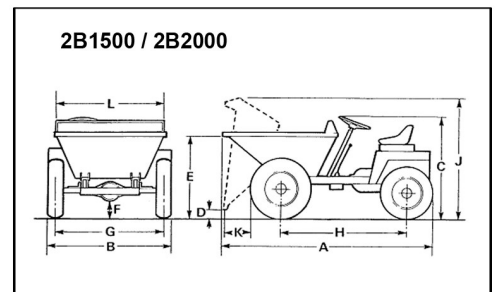
Tyres: 2B1500: Front - rough terrain 7.50 x 16. Rear - 6.00 x 16.
2B2000: Front - rough terrain 10.0/75 X 15.3. Rear - 6.00 x 16.

Road Speeds: 2B1500 - 1st - 3.54Kmh, 2nd - 8.37Kmh, 3rd - 15.61Kmh, Reverse - 4.02Kmh.
2B2000 - 1st - 3.87Kmh, 2nd - 8.71Kmh, 3rd - 15.65Kmh, Reverse - 4.32Kmh.

Tank Capacities: 2B1500 - Fuel 8.25 litres, Hydraulic 27.30 litres.
2B2000 - Fuel 26 litres, Hydraulic 27.30 litres.

Options: 2B1500 - electric start, hydraulic tipping skip, lighting kit.
2B2000 - electric start, lighting kit.

Dimensions	2B1500	2B2000
A Overall length	2.85 m	3.25 m
B Overall width	1.64 m	1.81 m
C Overall height	1.37 m	1.45 m
D Discharge height	0.13 m	0.13 m
E Loading height	1.17 m	1.37 m
F Ground clearance	0.28 m	0.28 m
G Track	1.37 m	1.37 m
H Wheel base	1.66 m	2.10 m
J Max height when tipped	1.47 m	1.73 m
K Forward discharge dist.	0.35 m	0.50 m
L Prow width	1.42 m	1.38 m
Machine weight	940 kg	1150 kg
Cube (free standing)	6.40 m3	8.53 m3



Skip Capacities		
	2B1500	2B2000
Payload	1500 kg	2000 kg
Water Level	700 litres	970 litres
Heaped	973 litres	1380 litres



Winget Limited

PO Box 41, Edgefold Industrial Estate
Bolton, BL4 0LR, England.

Tel: +44 (0)1204 854650, Fax: +44 (0)1204 854664
email: sales@winget.co.uk, www.winget.co.uk



Dealer Stamp